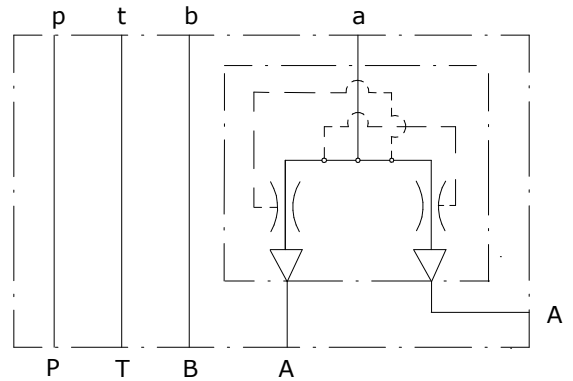
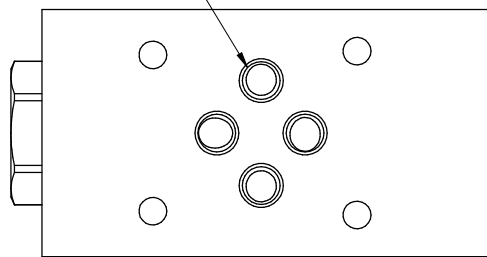


Schema idraulico  
 Hydraulic diagram

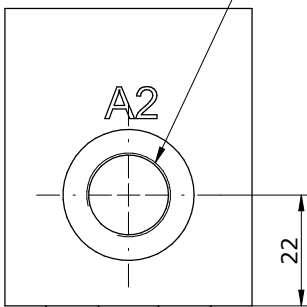


O-Ring side

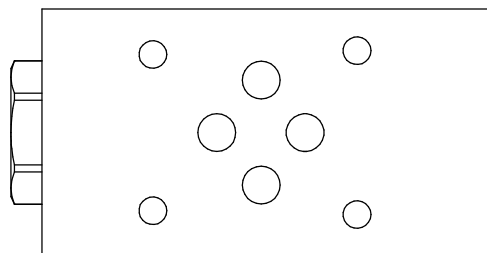
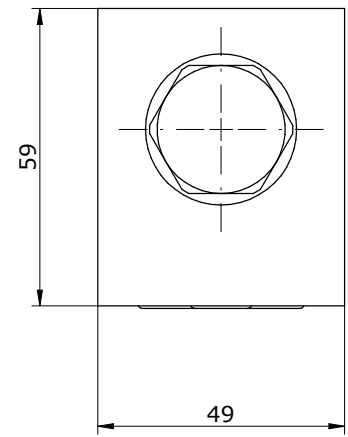
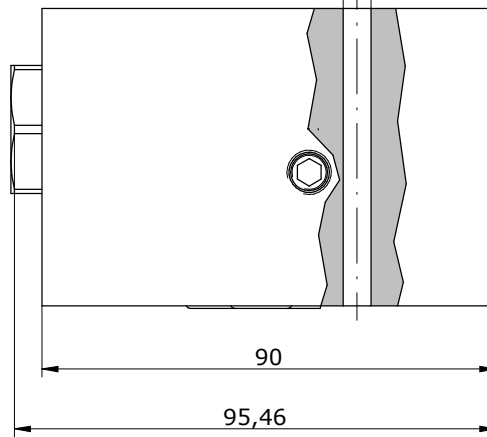
n°4 OR 108



BSP 3/8G

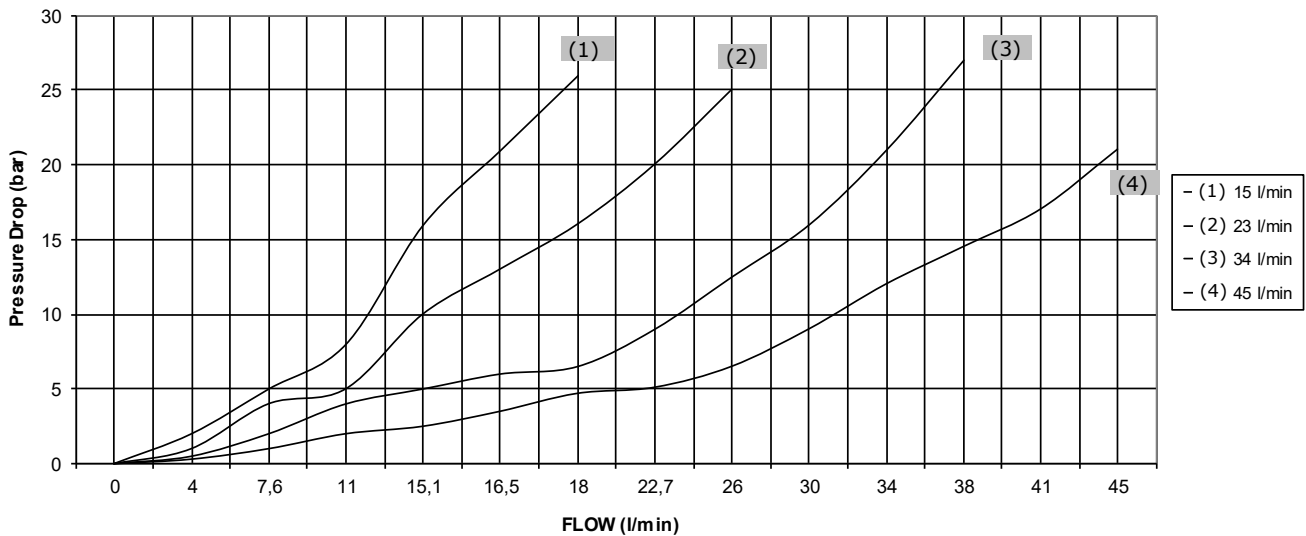


Ø 5,5



**CARATTERISTICHE TECNICHE**  
 CHARACTERISTICS

**PERFORMANCE**



Operating pressure: 345 bar  
 Accuracy:  $\pm 5\%$

**MV\_ 06 - FD - \_ - 10**

**S = STEEL**

INLET FLOW:

- 15** = UP TO 15 l/min
- 23** = UP TO 23 l/min
- 34** = UP TO 34 l/min
- 45** = UP TO 45 l/min