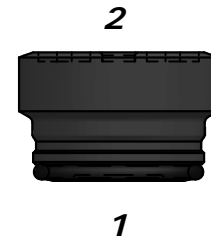


CARATTERISTICHE TECNICHE TECHNICAL CHARACTERISTICS

Pressione massima Maximum pressure	350 bar (3625 psi)
Portata nominale Nominal Flow	see table
Temperatura di esercizio Operating temperature	-30 / +100 °C
Cavità Cavity	see scheme
Trafilamento interno Internal leakage	0,10 cc/min max a 350 °C
Coppia Torque	-
Peso Weight	-

SCHEMA IDRAULICO HYDRAULIC SCHEME



DESCRIZIONE DESCRIPTION

La VRIP permette il passaggio libero del flusso di olio da 1 a 2, mentre blocca il flusso nella direzione opposta

The VRIP allows flow passage from 1 to 2, while blocking in the opposite direction

CODICE D'ORDINAZIONE ORDERING CODE

VRIP-B08-01-005-N

DIMENSIONE / SIZE

B08 = G1/8
B14 = G1/4
B38 = G3/8
B12 = G1/2
B34 = G3/4

GUARNIZIONI / SEALS

N = NBR
V = VITON

MOLLA / SPRING

005 = 0,5 bar

*MOLLE SPECIALI SU RICHIESTA
CUSTOM SPRINGS ON REQUEST

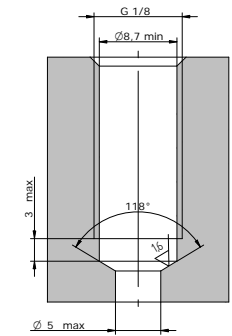
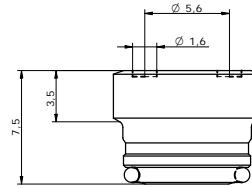
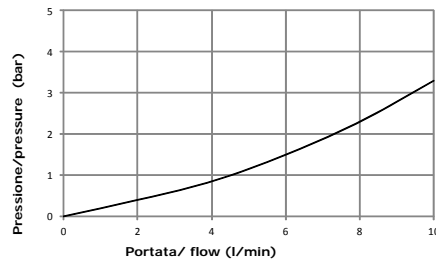
VRIP

VALVOLA DI RITEGNO A PISTONE AD INSERTO
CHECK VALVE - POPPET TYPE

2MP
OLEODINAMICA

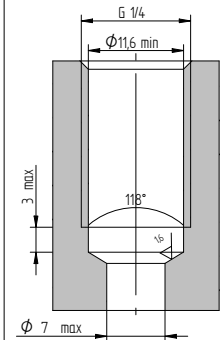
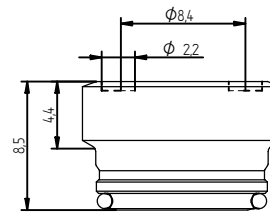
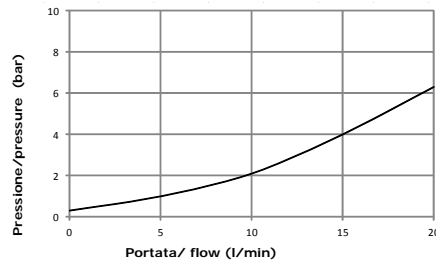
B08

Pressione massima Maximum pressure	350 bar
Portata nominale Nominal Flow	10 L/min
Coppia Torque	5 Nm
Peso Weight	0,002 Kg



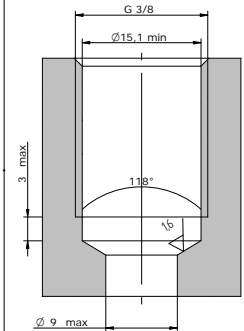
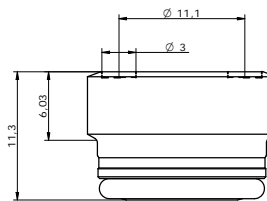
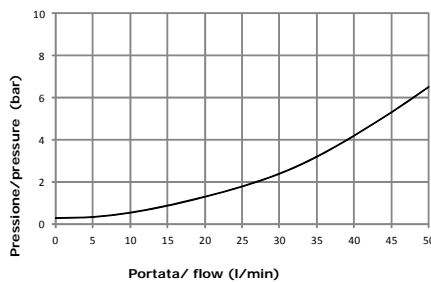
B14

Pressione massima Maximum pressure	350 bar
Portata nominale Nominal Flow	20 L/min
Coppia Torque	6 Nm
Peso Weight	0,005Kg



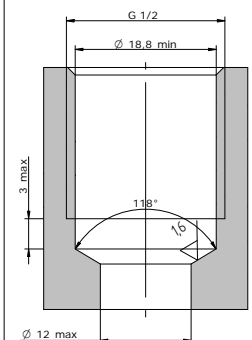
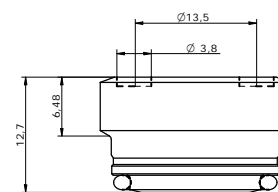
B38

Pressione massima Maximum pressure	350 bar
Portata nominale Nominal Flow	50 L/min
Coppia Torque	6 Nm
Peso Weight	0,011 Kg



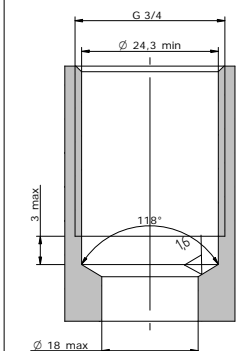
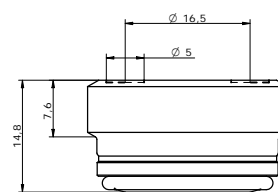
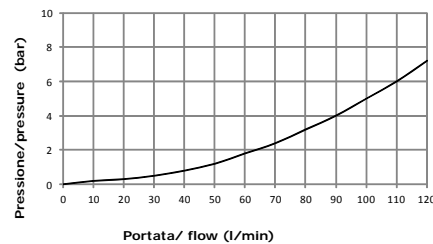
B12

Pressione massima Maximum pressure	350 bar
Portata nominale Nominal Flow	80 L/min
Coppia Torque	10 Nm
Peso Weight	0,019 Kg



B34

Pressione massima Maximum pressure	350 bar
Portata nominale Nominal Flow	120 L/min
Coppia Torque	15 Nm
Peso Weight	0,040 Kg



Via Nicolò Copernico 12/c-d
29027 Casoli Di Gariga - Podenzano (PC) Italy

www.oleodinamica2mp.it
Tel +39 0523 523231
Fax +39 0523 524509

CV.04.016.13