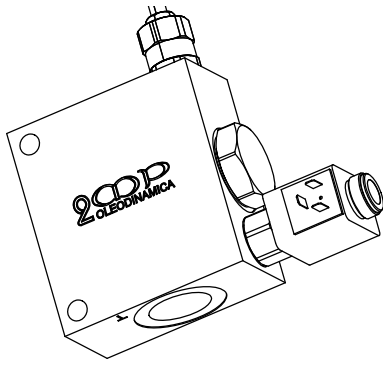
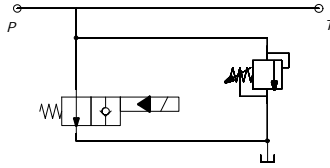


VALVOLA REGOLATRICE DI MASSIMA PRESSIONE CON ELETTROVALVOLA DI MESSA A SCARICO
SOLENOID OPERATED PRESSURE RELIEF VALVE WITH VENTING

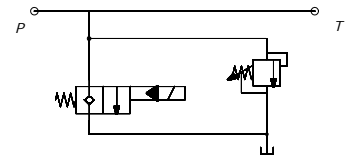


La RVV è una valvola per il montaggio in derivazione di linee di pressione con funzione di messa a scarico della linea e di valvola di massima pressione.
 E' disponibile nelle grandezze da 1/4 BSP a 1.1/2 BSP per portate sino a 380 l/1' con perdite di carico contenute grazie all'impiego di un elemento logico pilotato per il venting e la massima pressione.
 RVV valve is employed in the derivation of pressure lines with function of venting and relief.
 It's available in sizes from 1/4 BSP to 1.1/2 BSP, up to 380 l / 1' with low pressure drop by using Vented Spool-Type Logic Element .

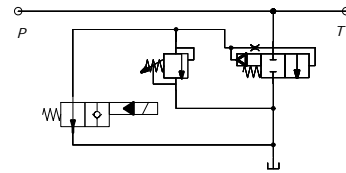
DIRETTO CON VALVOLA ELETTRICA NORMALMENTE APERTA.
 DIRECTED WITH VENTING VALVE NORMALLY OPEN



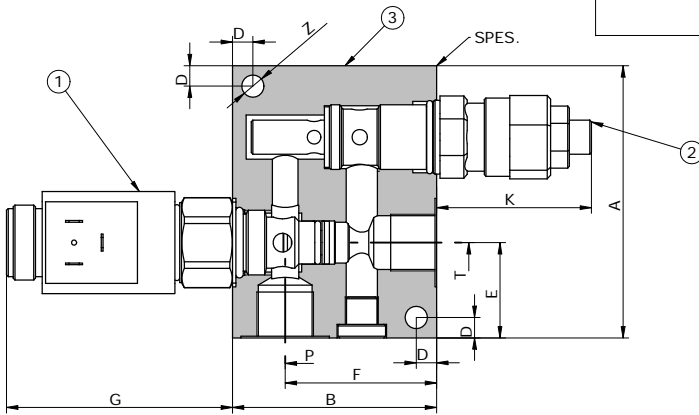
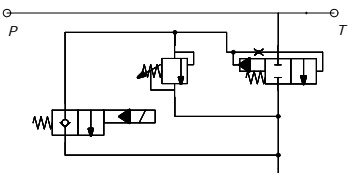
DIRETTO CON VALVOLA ELETTRICA NORMALMENTE CHIUSA.
 DIRECTED WITH VENTING VALVE NORMALLY CLOSED



PILOTATA CON VALVOLA ELETTRICA NORMALMENTE APERTA
 PILOT TYPE WITH VENTING VALVE NORMALLY OPEN



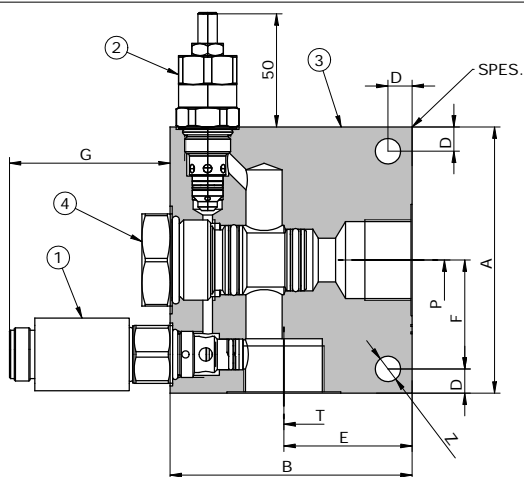
PILOTATA CON VALVOLA ELETTRICA NORMALMENTE CHIUSA
 PILOT TYPE WITH VENTING VALVE NORMALLY CLOSED



R V V _

- 01- VALVOLA ELETTRICA PER LA MESSA A SCARICO
ELECTRICAL VENTING VALVE
- 02- VALVOLA DI MASSIMA PRESSIONE
RELIEF VALVE
- 03- CORPO VALVOLA
VALVE BODY

	P-T	A	B	SPES.	K	D	E	F	G	Z
RVV_10	G1/4	80	55	40	36	6	28	39,5	61,7	6,5
RVV_20	G3/8	80	60	40	52	6	28	44,5	61,7	6,5



R V V _

- 01- VALVOLA ELETTRICA PER LA MESSA A SCARICO
ELECTRICAL VENTING VALVE
- 02- VALVOLA DI MASSIMA PRESSIONE
RELIEF VALVE
- 03- CORPO VALVOLA
VALVE BODY
- 04- ELEMENTO LOGICO
VENTED SPOOL-TYPE LOGIC ELEMENT

	P-T	A	B	SPES.	C	D	E	F	G	Z
RVV_30	G1/2	100	85	40	37,5	8	44	42	61,7	8,5
RVV_40	G3/4	100	85	40	37,5	8	40,2	42	61,7	8,5
RVV_50	G1"	110	100	50	37,5	10	53	45	61,7	10,5
RVV_60	G1.1/4"	130	130	70	37,5	12	78	63	61,7	12,5
RVV_70	G1.1/2"	130	130	80	37,5	12	70	63	61,7	12,5

Via Nicolò Copernico 12/c-d
 29027 Casoli Di Gariga - Podenzano (PC) Italy

www.oleodinamica2mp.it
 Tel +39 0523 523231
 Fax +39 0523 524509

PER ORDINARE / TO ORDER

R V V - - - - - 10

VALVOLA REGOLATRICE DI MASSIMA PRESSIONE CON ELETTROVALVOLA DI MESSA A SCARICO
 SOLENOID OPERATED PRESSURE RELIEF VALVE WITH VENTING

MATERIALE / MATERIAL

A = ALLUMINIO / ALLUMINIUM
 S = AVP / STEEL

ATTACCHI / PORTING

10 = 1/4"
 20 = 3/8"
 30 = 1/2"
 40 = 3/4"
 50 = 1"
 60 = 1.1/4"
 70 = 1.1/2"

VALVOLA ELETTRICA / ELECTRIC VALVE

NA = NORMALMENTE APERTA / NORMALLY OPEN (SVCP- S08- TS2)
 NC = NORMALMENTE CHIUSA / NORMALLY CLOSED (SVCP- S08 -TS1)

TARATURA MOLLA / SPRING RANGE

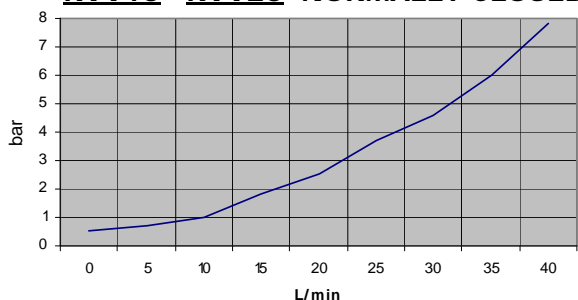
1 = 5-50 BAR
 2 = 30-100 BAR
 3 = 50-250 BAR
 4 = 100-350 BAR

TENSIONE STANDARD BOBINA / VOLTAGE STANDARD COIL

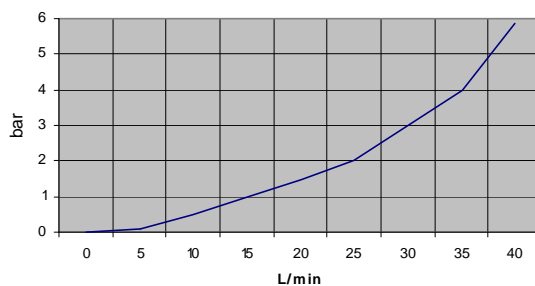
1 = 12 V dc DIN 43650
 2 = 24 V dc DIN 43650

PERDITE DI CARICO / PRESSURE PERFORMANCE

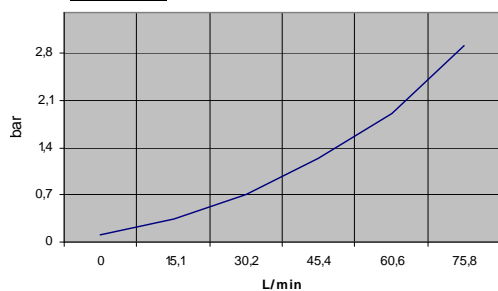
RVV10 RVV20 NORMALLY CLOSED



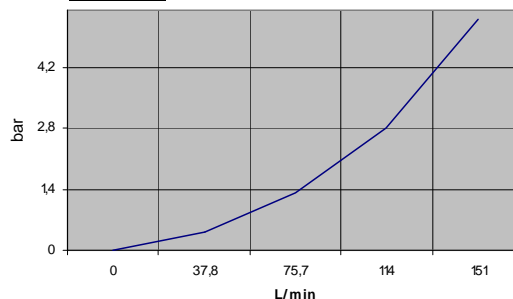
RVV10 RVV20 NORMALLY OPEN



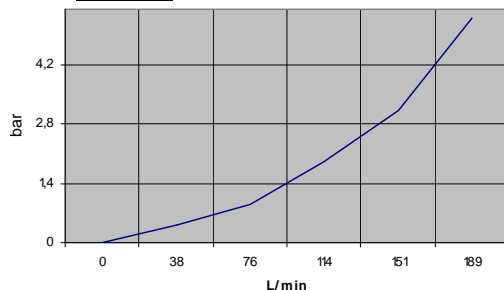
RVV30



RVV40



RVV50



RVV60 RVV70

