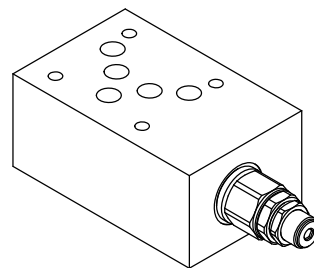
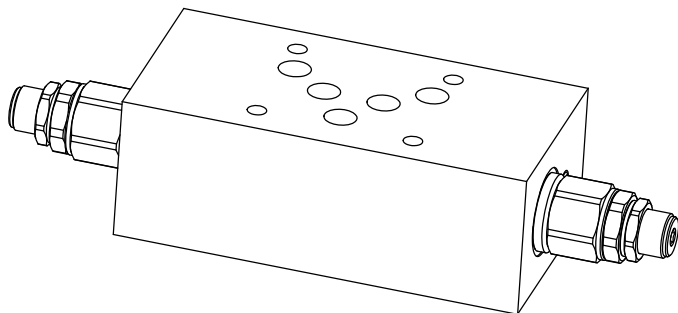
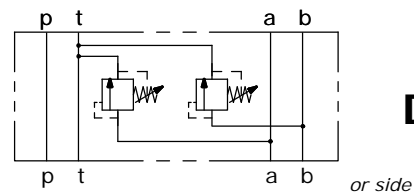
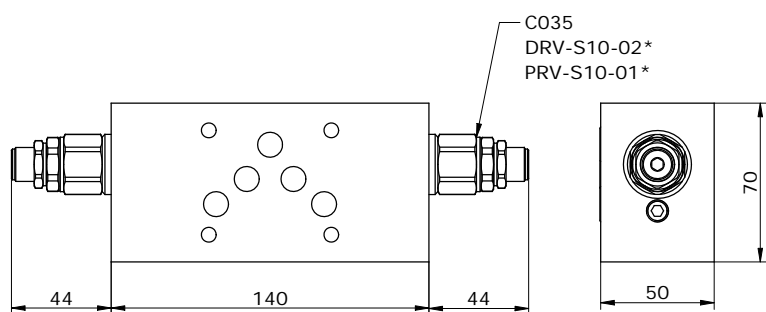


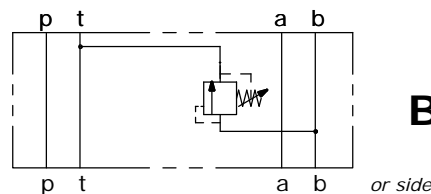
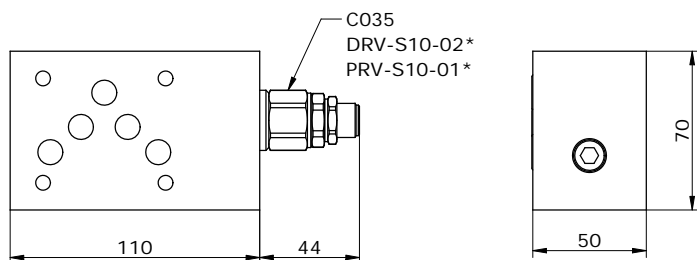
**VALVOLA MODULARE CETOP 5 REGOLATRICE DI PRESSIONE  
MODULAR PLATE NG10 RELIEF VALVE**



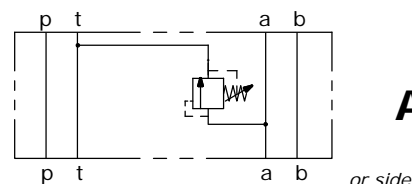
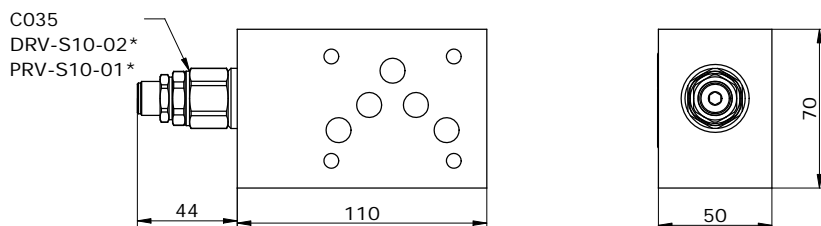
**MV\_ 10 - RV - \_\_**



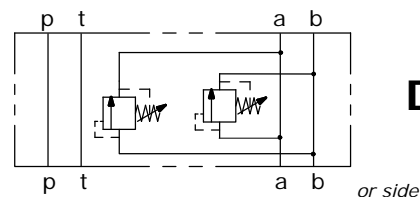
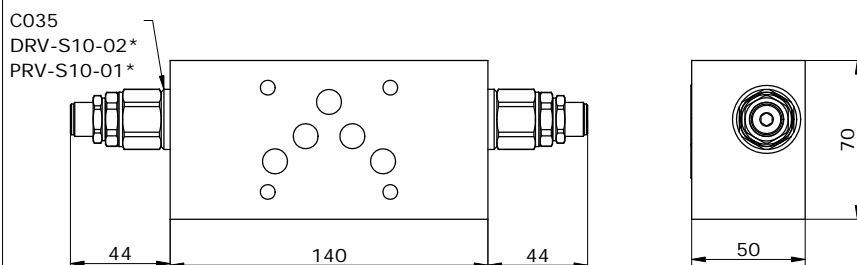
**DT**



**BT**

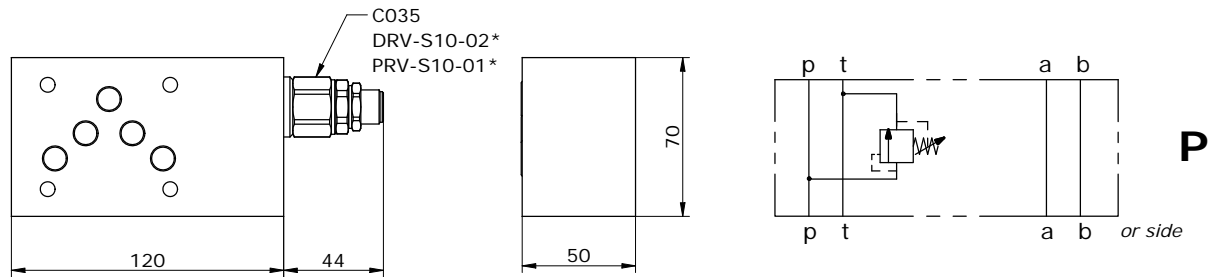


**AT**



**D**

**VALVOLA MODULARE CETOP 5 REGOLATRICE DI PRESSIONE  
MODULAR PLATE NG10 RELIEF VALVE**



**TIPI DI REGOLAZIONE PER V. MAX  
REGULATION TYPE FOR RELIEF VALVE**

	<b>H</b> VITE CON CHIAVE ESAGONALE (standard) HEXAGONAL HEAD SCREW
	<b>K</b> POMOLO KNOB
	<b>C</b> FISSA CON CAPPuccio COVER CAP
	<b>I</b> INVIOLABILE NON ADJUSTABLE

**\* PER LA DRV-S10-02 SONO DISPONIBILI SOLO LA VERSIONI "H" E "I".  
FOR DRV-S10-02 IS ONLY AVAILABLE "H" AND "I" VERSIONS.**

**MV\_ 10 - RV - \_ - \_ - \_ - \_ - 10**

**S** = STEEL  
**A** = ALUMINUM

**D** = A vs. B ; B vs. A  
**DT** = A vs. T ; B vs. T  
**P** = P vs. T  
**AT** = A vs. T  
**BT** = B vs. T

SERIES

**H** = HEXAGONAL HEAD SCREW  
**K** = KNOB  
**C** = COVER CAP  
**I** = NOT ADJUSTABLE

**N** = NBR (standard)  
**V** = VITON

DIRECT RELIEF VALVE DRV-S10-02*	PILOT RELIEF VALVE PRV-S10-01
1 = 5-75 bar	5 = up to 140 bar
2 = 75-125 bar	6 = up to 280 bar
3 = 125-220 bar	7 = up to 420 bar
4 = 220-350 bar	

\*see **CARTDRIGE VALVES** catalog

Via Nicolò Copernico 12/c-d  
29027 Casoli Di Gariga - Podenzano (PC) Italy

www.oleodinamica2mp.it  
Tel +39 0523 523231  
Fax +39 0523 524509