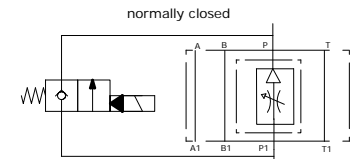
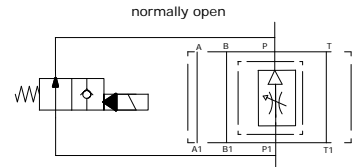
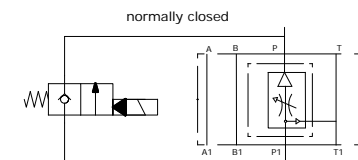
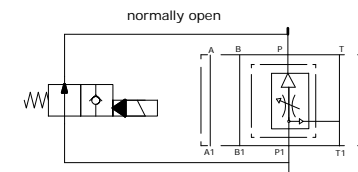


Schema idraulico
Hydraulic diagram

MVS 06-FRRP-2

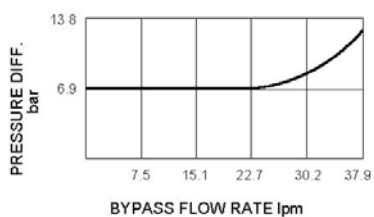
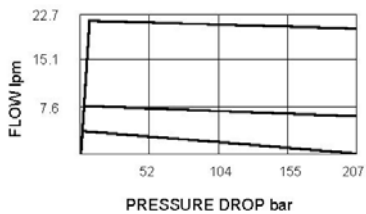


MVS 06-FRRP-3

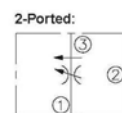


CARATTERISTICHE REGOLATORE DI FLUSSO
 FLOW REGULATION VALVE PERFORMANCE

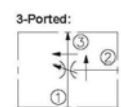
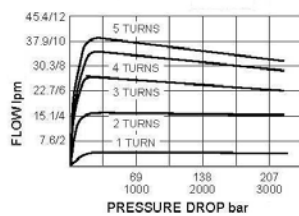
SERIE : 024 TO 289
RANGE: 024 TO 289



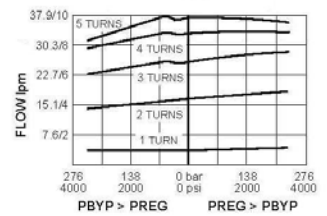
SERIE : 390
RANGE : 390



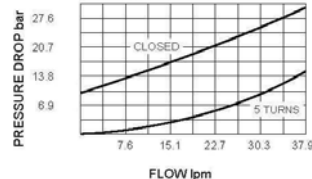
2-Ported
Regulated Flow vs. Pressure Drop
at 240 bar oil at 40°C



3-Ported
Regulated Flow vs. Load
at 38 lpm oil at 40°C



Pressure Drop vs. Reverse Flow
from ③ to ①
34.5 bar Inlet Pressure
32 cST/150 ssu oil at 40°C

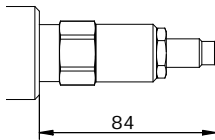


OPZIONI DI REGOLAZIONE
ADJUSTMENT OPTIONS

SERIE : 024 TO 289
RANGE: 024 TO 289

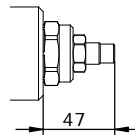
SERIE : 390
RANGE : 390

WITH HEX ALLEN HEAD

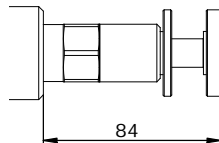


H

WITH HEX ALLEN HEAD

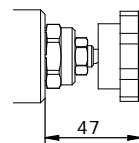


WITH ALUMINUM KNOB



K

WITH PLASTIC KNOB



MV_06 - FRR - - - - - 10

S = STEEL
 A = ALUMINUM

P = REGULATION ON P

2 = 2 PORTS
 3 = 3 PORTS

FLOW REGULATION

- 024 = 1,42 TO 2,37 LPM
- 047 = 2,84 TO 4,73 LPM
- 096 = 5,68 TO 9,46 LPM
- 118 = 7,08 TO 11,81 LPM
- 141 = 8,52 TO 14,19 LPM
- 189 = 11,35 TO 18,93 LPM
- 236 = 14,19 TO 23,66 LPM
- 289 = 17,03 TO 28,93 LPM
- 390 = 0 TO 34 LPM

H = HEXAGONAL HEAD SCREW
 K = KNOB

N = BUNA (standard)
 V = VITON

VENTING VALVE

TS1 : NORMALLY CLOSED
 TS2 : NORMALLY OPEN

REGOLAZIONE / REGULATION

SVCP-S08-TS1	SVCP-08-TS2
0 = SENZA COMANDO MANUALE / WITHOUT MANUAL OVERRIDE	
1 = VITE / SCREW	3 = PRESSIONE SU SPINA / PUSH PIN
2 = SPINGA E GIRA / PUSH AND TWIST	4 = PRESSIONE SU BOTTONE / PUSH BOTTON
6 = TAPPO PREMUTO / PULL AND HOLD	5 = BRUGOLA / ALLEN

TENSIONE / TENSION

SVCP-S08-TS1	SVCP-08-TS2
000 = SENZA BOBINA / WITHOUT COIL	
D12 = 12 VDC	D12 = 12 VDC
D24 = 24 VDC	D24 = 24 VDC
Z20 = 220 RAC	Z20 = 220 RAC

SERIES

TIPO CONNETTORE /
 CONNECTOR TYPE
 0 = SENZA BOBINE /
 WITHOUT COIL
 C = CAVI / LEADS
 D = DIN 43650
 G = DEUTSCH DT04-2P
 A = AMP JUNIOR