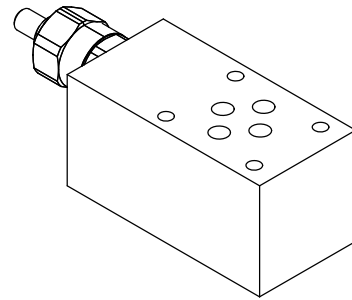
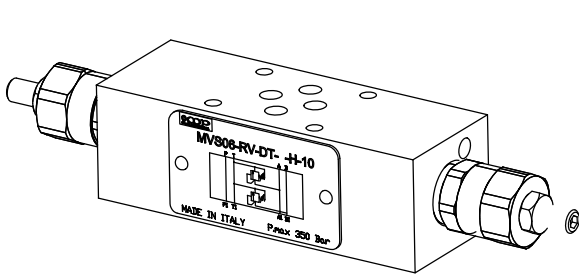
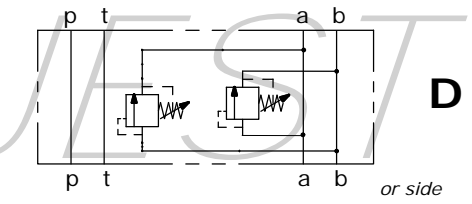
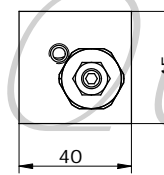
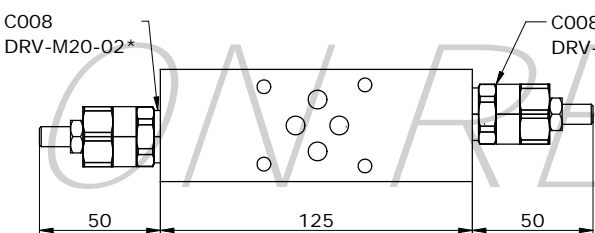
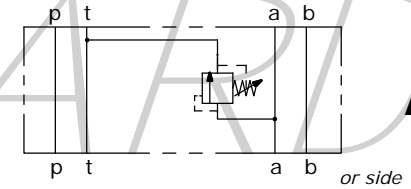
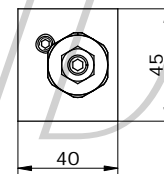
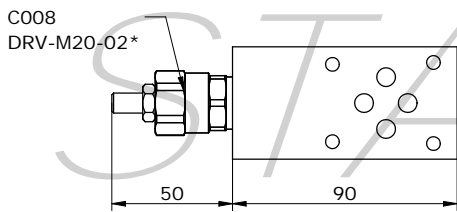
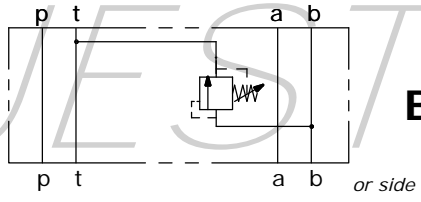
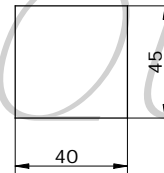
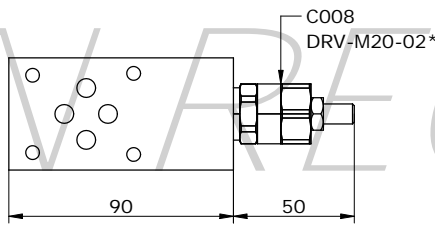
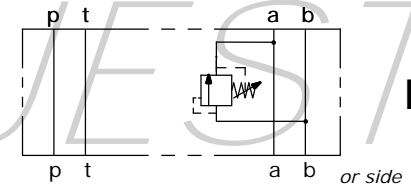
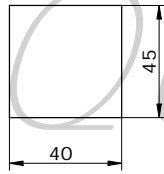
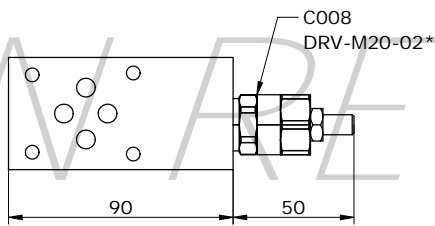
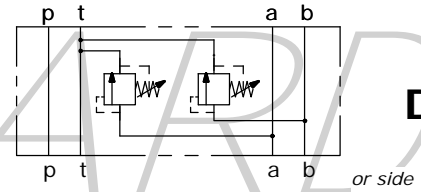
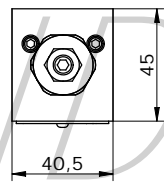
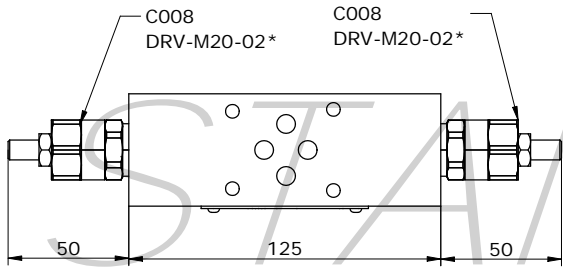


**VALVOLA MODULARE CETOP 3 REGOLATRICE DI PRESSIONE
MODULAR PLATE NG6 RELIEF VALVE**

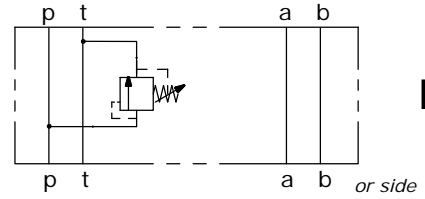
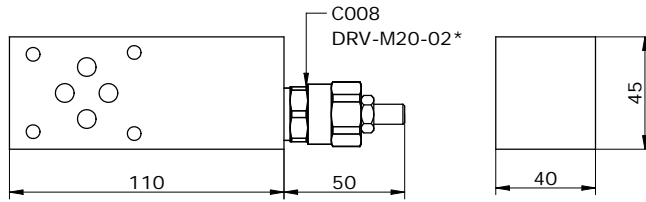


MV_06 - RV - ___

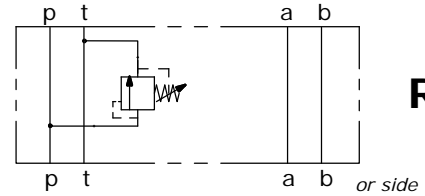
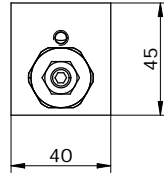
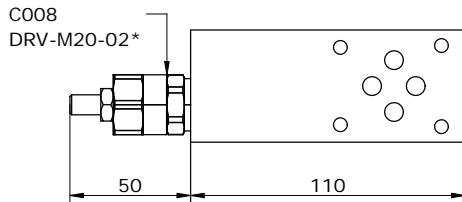


Via Nicolò Copernico 12/c-d
29027 Casani Di Gariga - Podenzano (PC) Italy

www.oleodinamica2mp.it
Tel +39 0523 523231
Fax +39 0523 524509

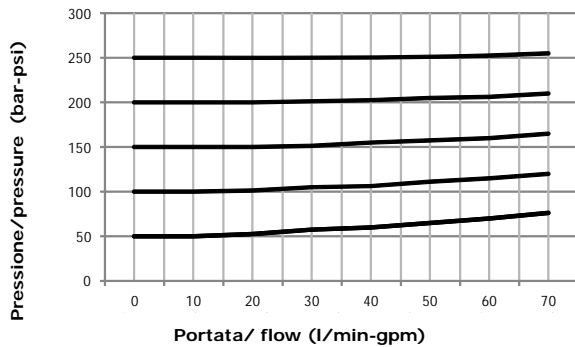


P



RP

PRESTAZIONI
PERFORMANCES



TIPI DI REGOLAZIONI
REGULATION TYPE

	H	VITE CON CHIAVE ESAGONALE (standard) <i>HEXAGONAL HEAD SCREW</i>
	K	POMOLO <i>KNOB</i>
	C	FISSA CON CAPPUCCIO <i>COVER CAP</i>
	I	INVIOLABILE <i>NON ADJUSTABLE</i>

MV_06 - RV - _____ - _____ - _____ - _____ - 10

S = STEEL
A = ALUMINUM

D = A vs. B ; B vs. A
DT = A vs. T ; B vs. T
P = P vs. T
AT = A vs. T
BT = B vs. T
BA = B vs. A
RP = P vs. T -left version

1 = 5-50 bar
2 = 20-100 bar
3 = 50-220 bar
4 = 100-350 bar
5 = 100-420 bar

SERIES

H = HEAD SCREW
K = KNOB
C = COVER CAP
I = NOT ADJUSTABLE

N = NBR (standard)
V = VITON

*see **CARTDRIGE VALVES** catalog

Via Nicolò Copernico 12/c-d
29027 Casoli Di Gariga - Podenzano (PC) Italy

www.oleodinamica2mp.it
Tel +39 0523 523231
Fax +39 0523 524509