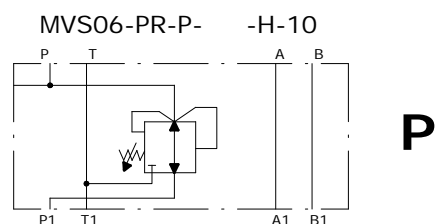
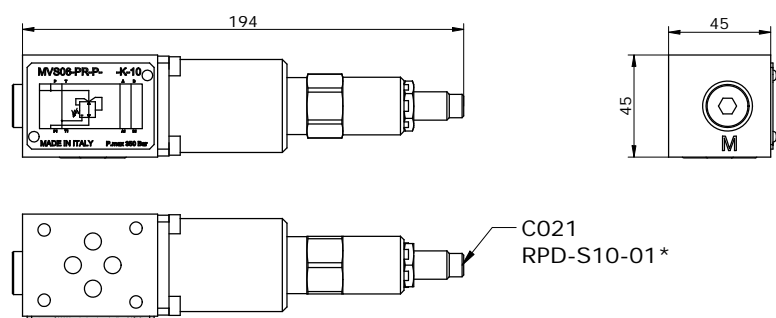
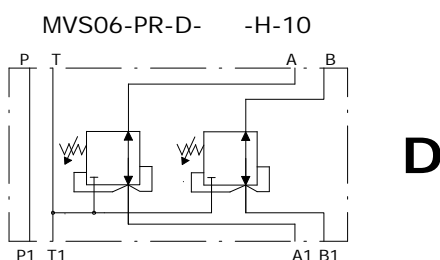
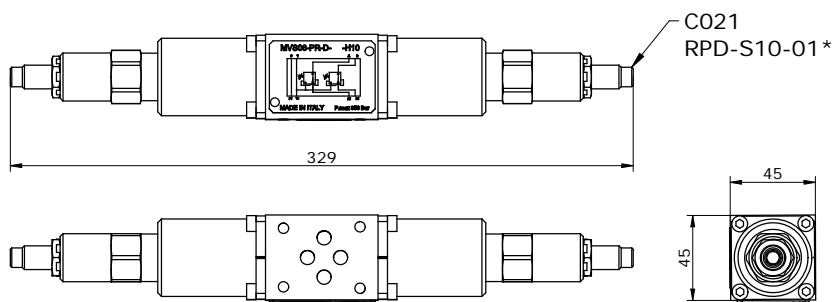
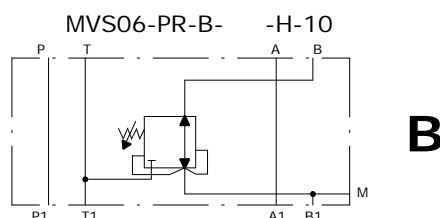
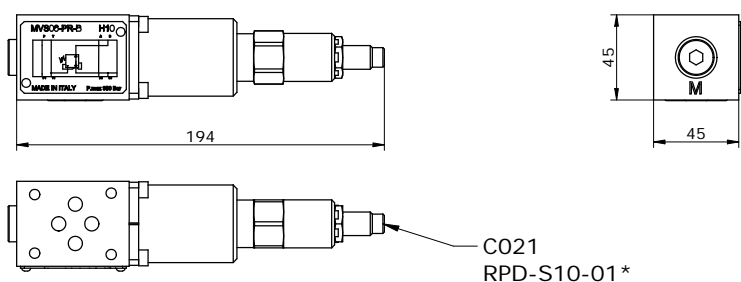
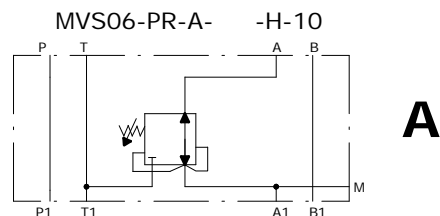
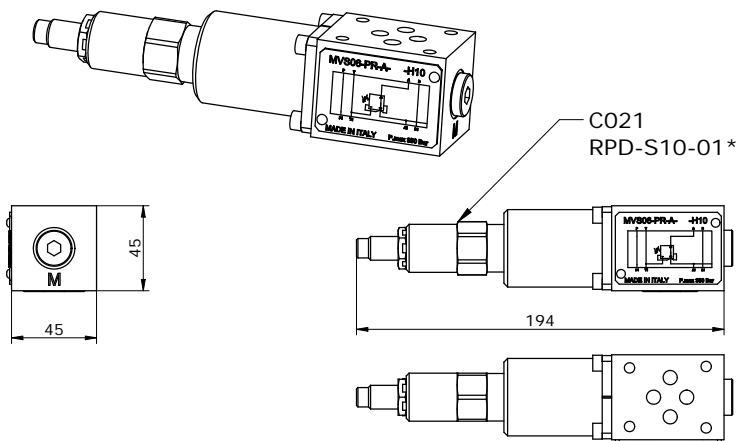
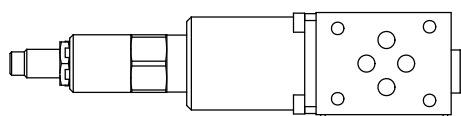


**VALVOLA RIDUTTRICE DI PRESSIONE MODULARE CETOP 3
MODULAR PRESSURE REDUCING VALVE CETOP 3**



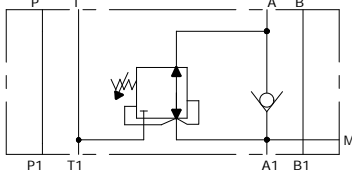
MVS06-PR-P-L- -H-10
LEFT VERSION FOR PORT P



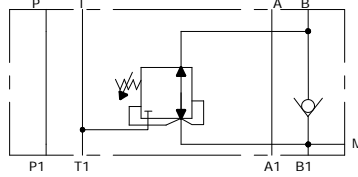
MV_06- PR - _

RELIEVING VERSIONS

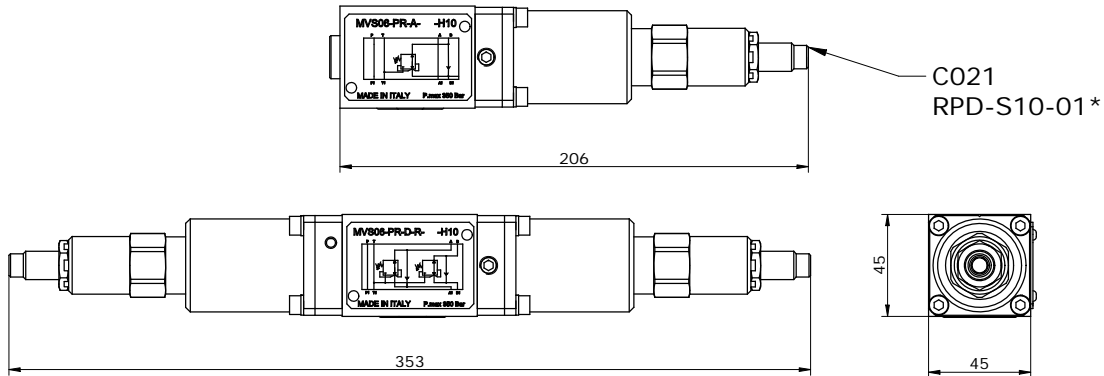
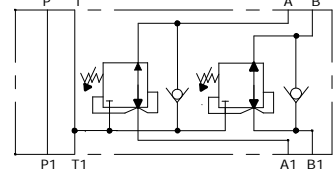
MVS06-PR-A- -R-H-10



MVS06-PR-B- -R-H-10

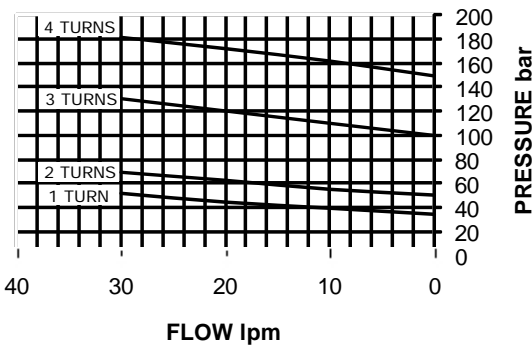


MVS06-PR-D- -R-H-10



C021
RPD-S10-01*

CARATTERISTICHE TECNICHE
PERFORMANCES



	H	VITE CON CHIAVE ESAGONALE (standard) HEXAGONAL HEAD SCREW
	K	POMOLO KNOB
	C	FISSA CON CAPPUCCIO COVER CAP
	I	INVIOLABILE NON ADJUSTABLE

MV_06-PR- - - - -10

S = STEEL
A = ALUMINIUM

P = PORT P
D = PORT A-B
A = PORT A
B = PORT B

30 = 5 - 30 bar
55 = 15 - 55 bar
103 = 20 - 103 bar
165 = 30 - 165 bar

SERIES

H = HEXAGONAL HEAD SCREW
K = KNOB
C = COVER CAP
I = NOT ADJUSTABLE

L = LEFT (ONLY FOR PORT P)
O = WITHOUT RELIEVING
R = WITH RELIEVING(FOR A-B-D SERIES)

*see **CARTDRIGE VALVES** catalog