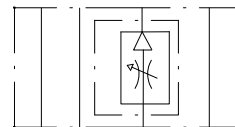
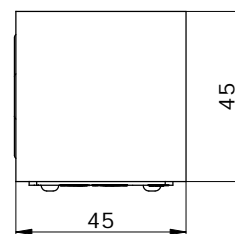
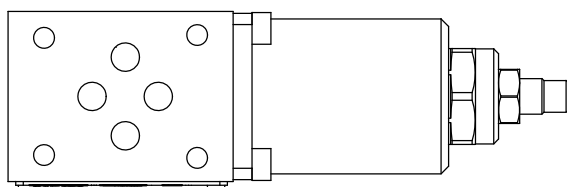
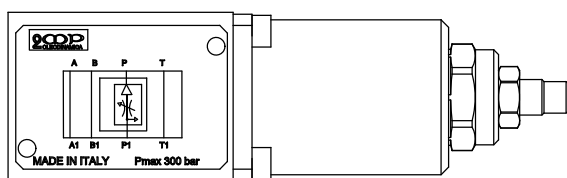
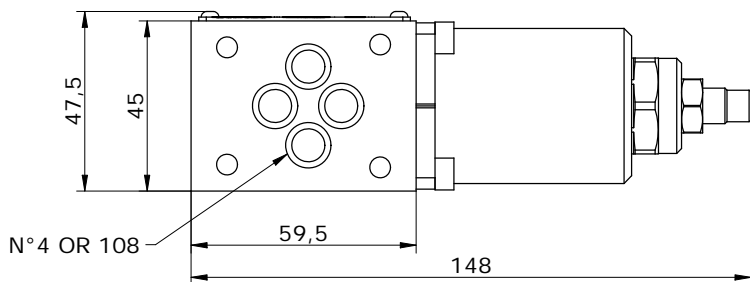
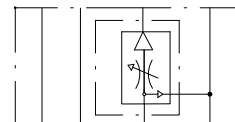


Schema idraulico
 Hydraulic diagram

MVS 06-FRCP-2



MVS 06-FRCP-3

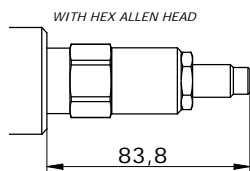


OPZIONI DI REGOLAZIONE

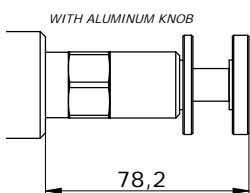
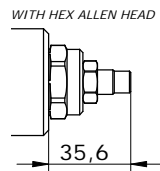
ADJUSTMENT OPTION

SERIE : 024 TO 289
RANGE : 024 TO 289

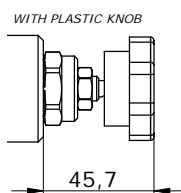
SERIE : 390
RANGE : 390



H



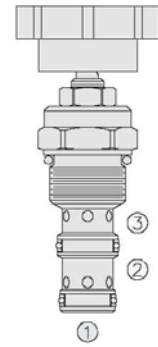
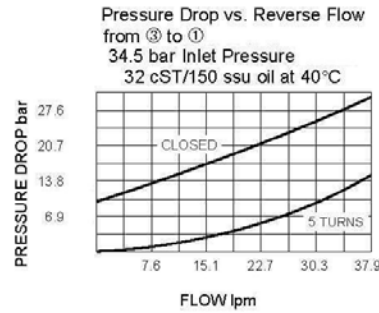
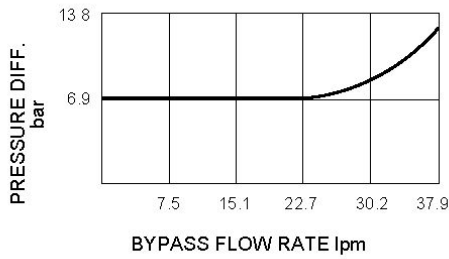
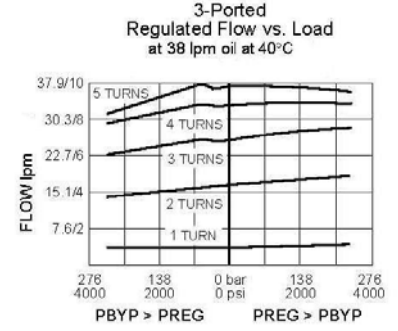
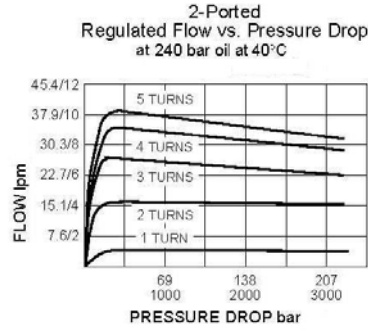
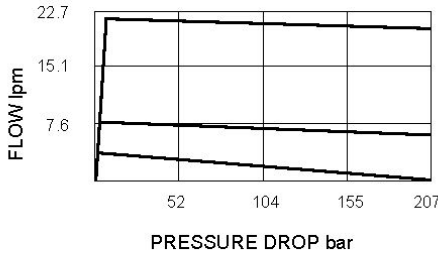
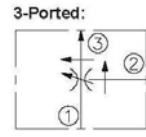
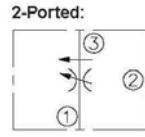
K



CARATTERISTICHE
PERFORMANCE

SERIE : 390
RANGE : 390

SERIE : 024 TO 289
RANGE: 024 TO 289



MV_06 - FRC - - - - 10

S = STEEL
A = ALUMINUM

P = REGULATION ON P

H = HEXAGONAL HEAD SCREW
K = KNOB

2 = 2 PORTS
3 = 3 PORTS

024 = 1,42 TO 2,37 LPM
047 = 2,84 TO 4,73 LPM
096 = 5,68 TO 9,46 LPM
118 = 7,08 TO 11,81 LPM
141 = 8,52 TO 14,19 LPM
189 = 11,35 TO 18,93 LPM
236 = 14,19 TO 23,66 LPM
289 = 17,03 TO 28,93 LPM
390 = 0 TO 34 LPM