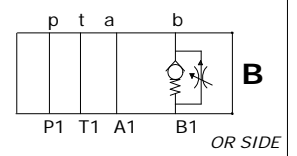
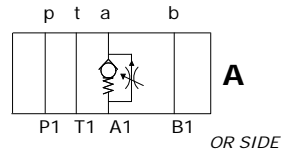
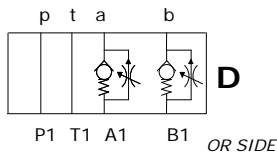
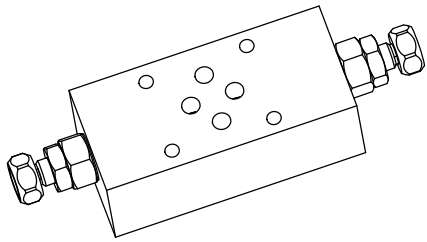


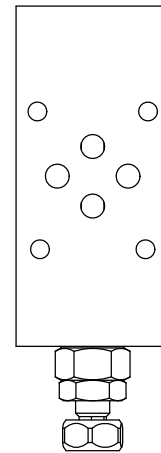
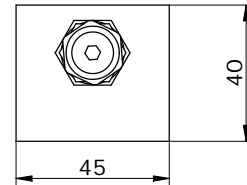
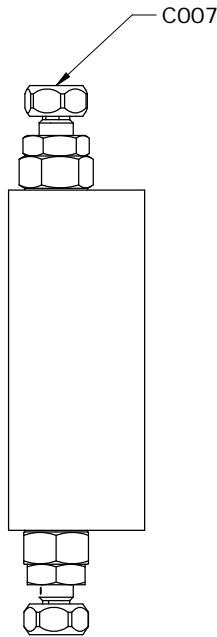
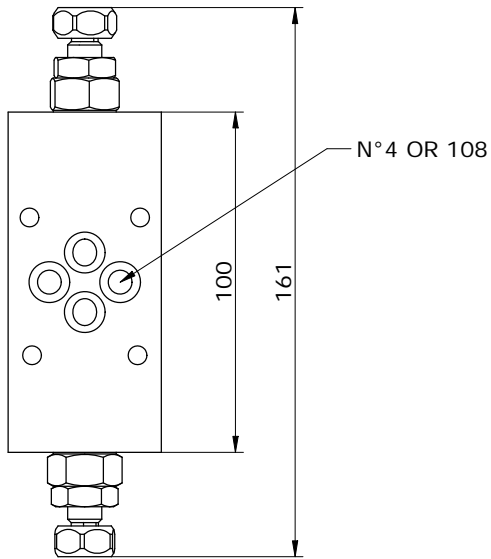
**VALVOLA REGOLATRICE DI FLUSSO UNIDIREZIONALE CETOP 3
MODULAR ONE WAY FLOW CONTROL VALVE CETOP 3**



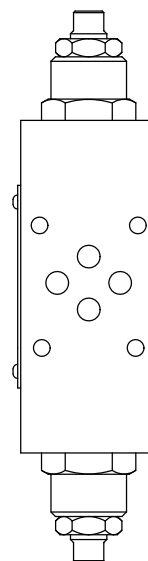
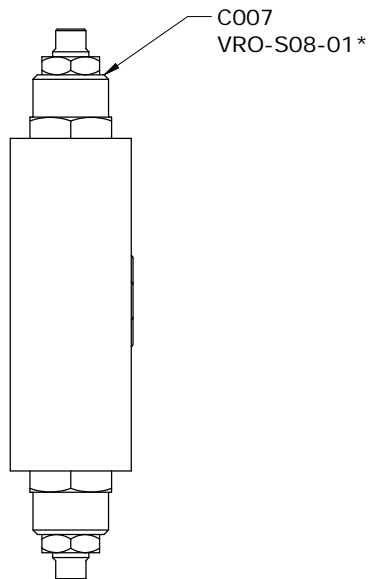
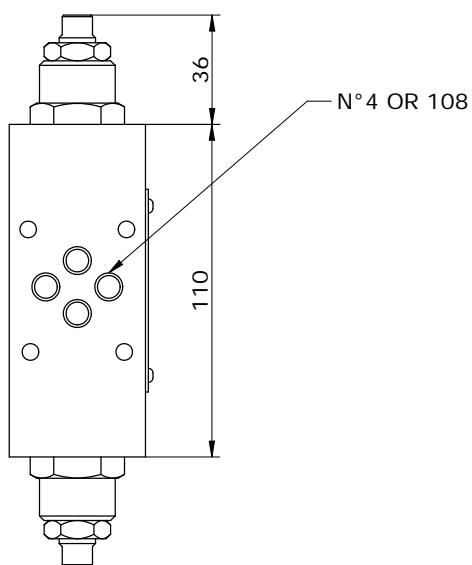
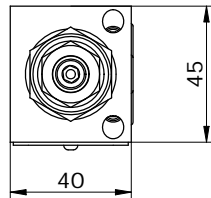
Schema idraulico
Hydraulic diagram



MV_06 - FR - D - H - 10

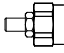

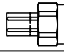
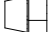


MV_06 - FR - H - D - H - 10



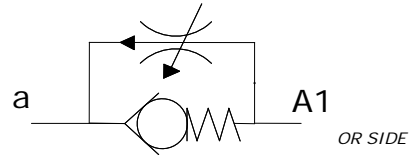
**OPZIONI DI REGOLAZIONE PER LA
 VERSIONE MV_06-FR-H**

*ADJUSTMENT OPTION ONLY FOR
 MV_06-FR-H*

	H	VITE CON CHIAVE ESAGONALE (standard) HEXAGONAL HEAD SCREW
	K	POMOLO KNOB
	C	FISSA CON CAPPuccio COVER CAP
	I	INVIOlabILE NON ADJUSTABLE

**DIAGRAMMI PERDITE DI
 CARICO FLUSSO LIBERO**
PRESSURE DROP FREE FLOW

MV_06-FR-D-_-10



MV_06 - FR - _ - _ - _ - 10

S = STEEL
A = ALUMINIUM

OMETTERE / OMIT
H = UP TO 50L / TO 50L

D = DOUBLE
A = PORT A
B = PORT B

 SERIES

H = HEXAGONAL HEAD SCREW
K = KNOB
C = COVER CAP
I = NOT ADJUSTABLE

*see *CARTDRIGE VALVES* catalog

Via Nicolò Copernico 12/c-d
 29027 Casoni Di Gariga - Podenzano (PC) Italy

www.oleodinamica2mp.it
 Tel +39 0523 523231
 Fax +39 0523 524509