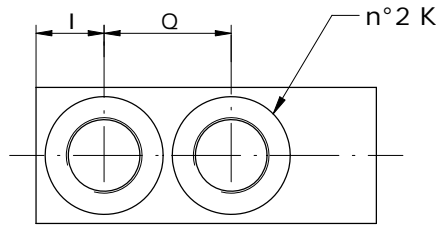
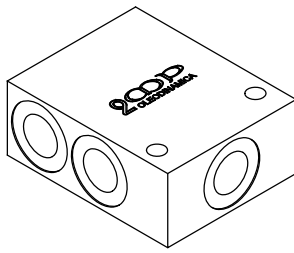
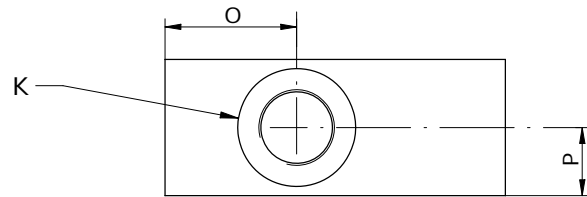
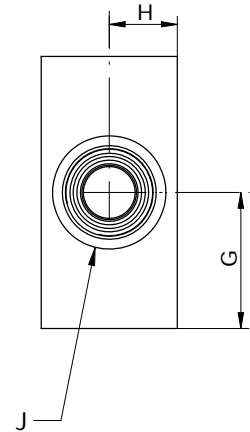
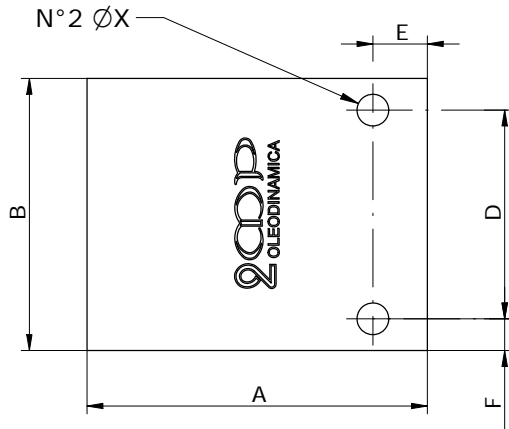
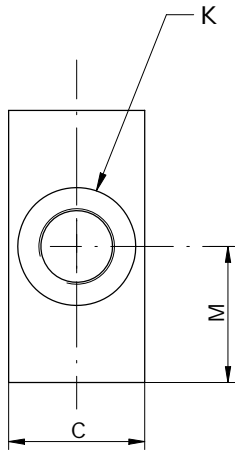
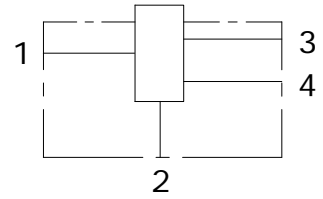


**COLLETTORE 4 VIE PER VALVOLA SAE 08-10-12-16**  
**4 WAY HOUSING FOR SAE 08-10-12-16**



Schema idraulico  
Hydraulic diagram



BLOCCO	A	B	C	D	E	F	G	H	I	L	M	N	O	P	Q	J	CAVITY	K	X
HS 08-4	75	60	30	46	12	7	30	15	15	15	30	15	29	15	28	SAE 08-4	C001	BSP3/8G - BSP1/4G	6.5
HS 10-4	85	60	40	46	8	7	30	20	18	20	30	20	34	20	32	SAE 10-4	C037	BSP1/2G - BSP3/8G	6.5
HS 12-4	120	80	50	64	8	8	40	25	27.5	25	40	25	53	25	50.5	SAE 12-4	C067	BSP3/4G - BSP1/2G	8.5
HS 16-4	125	90	50	70	10	10	45	25	25	25	45	25	54	25	57.5	SAE 16-4	C068	BSP1G - BSP3/4G	11

**HS - \_ - \_ - 4 - \_**

**S** = STEEL  
**A** = ALUMINIUM

**08** = 3/4-16UNF  
**10** = 7/8-14UNF  
**12** = 1.1/16-12 UNF  
**16** = 1.5/16-12 UNF

**14** = 1/4"  
**38** = 3/8"  
**12** = 1/2"  
**34** = 3/4"  
**100** = 1"

Via Nicolò Copernico 12/c-d  
 29027 Casoli Di Gariga - Podenzano (PC) Italy

www.oleodinamica2mp.it  
 Tel +39 0523 523231  
 Fax +39 0523 524509