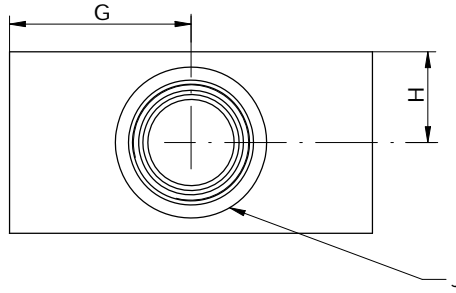
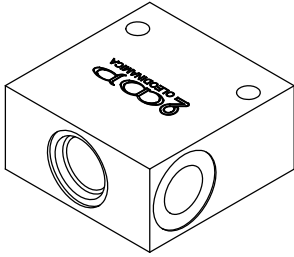
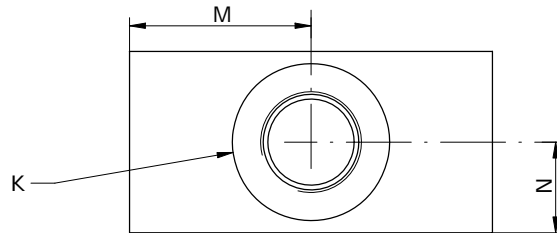
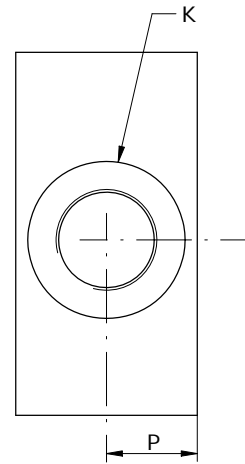
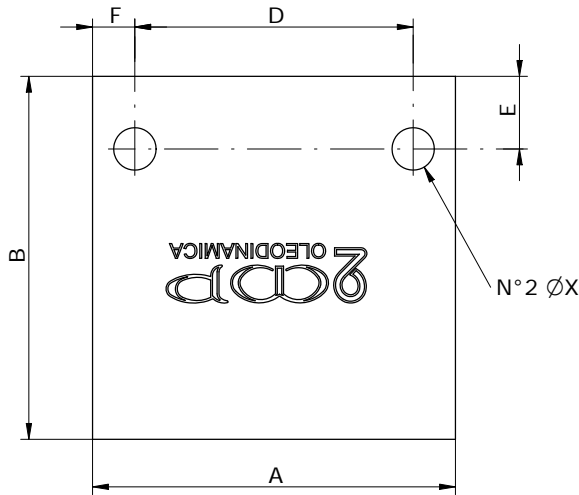
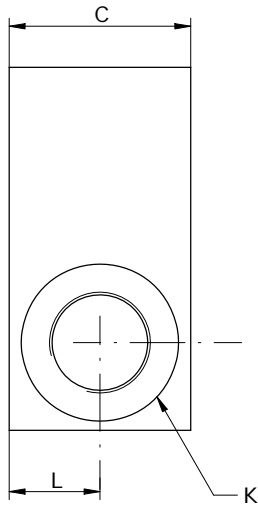
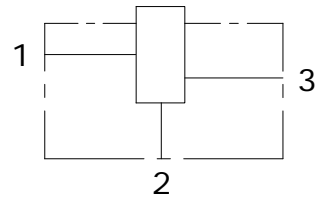


COLLETTORE 3 VIE PER VALVOLA SAE 08-10-12-16
3 WAY HOUSING FOR SAE 08-10-12-16



Schema idraulico
Hydraulic diagram



BLOCCO	A	B	C	D	E	F	G	H	I	L	M	N	O	P	J	CAVITY	K	X
HS 08-3	60	60	30	46	12	7	30	15	45.5	15	30	15	31	15	SAE 08	C012	3/8"BSP - 1/4"BSP	6.5
HS 10-3	60	65	40	48	7	6	30	20	51	20	30	20	33,5	20	SAE 10-2	C021	1/2"BSP - 3/8"BSP	6.5
HS 12-3	80	100	50	64	8	8	40	25	72.5	25	40	25	47	25	SAE 12-2	C054	3/4"BSP - 1/2"BSP	8.5
HS 16-3	90	100	50	70	10	10	45	25	75	25	45	25	46	25	SAE 16-2	C056	1"BSP - 3/4"BSP	11

HS - - - 3 - - -

S = STEEL
A = ALUMINUM

08 = 3/4-16 UNF
10 = 7/8-14 UNF
12 = 1.1/16-12 UNF
16 = 1.5/16-12 UNF

14 = BSP 1/4G
38 = BSP 3/8G
12 = BSP 1/2G
34 = BSP 3/4G
100 = BSP 1G

Via Nicolò Copernico 12/c-d
 29027 Casoni Di Gariga - Podenzano (PC) Italy

www.oleodinamica2mp.it
 Tel +39 0523 523231
 Fax +39 0523 524509