

## CARATTERISTICHE TECNICHE TECHNICAL CHARACTERISTICS

**Pressione massima**  
Maximum pressure 250 bar (3045 psi)

**Portata massima**  
Maximum pressure compensated flow -

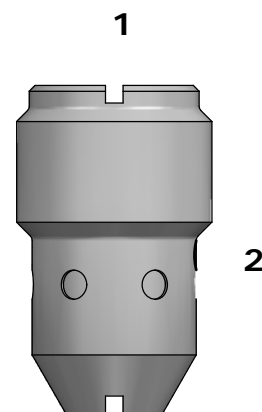
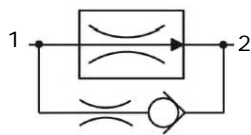
**Temperatura di esercizio**  
Operating temperature -30 / +100 °C

**Cavità**  
Cavity -

**Coppia**  
Torque -

**Peso**  
Weight -

## SCHEMA IDRAULICO HYDRAULIC SCHEME



## DESCRIZIONE DESCRIPTION

La portata da 1 a 2 è indipendente dalla pressione del sistema ed è determinata dalla pressione di un orifizio tarato.

*The flow rate of this valve in the 1 to 2 flow path is largely independent of the system pressure and is determined by the dimension of a calibrated orifice.*

## CODICE D'ORDINAZIONE ORDERING CODE

# FRIC-B14-010-N-0

### DIMENSIONE / SIZE

S08 = ø12,7  
B14 = G1/4  
B38 = G3/8  
B12 = G1/2

### REVISIONE

### GUARNIZIONI / SEALS

N = NBR

### REGOLAZIONE PORTATA / FLOW SETTING

| S08  |         | B14  |         | B38  |         | B12  |         |
|------|---------|------|---------|------|---------|------|---------|
| Code | Flow    | Code | Flow    | Code | Flow    | Code | Flow    |
| 010  | 1l/min  | 010  | 1l/min  | 040  | 4l/min  | 120  | 12l/min |
| 020  | 2l/min  | 020  | 2l/min  | 050  | 5l/min  | 160  | 16l/min |
| 030  | 3l/min  | 030  | 3l/min  | 060  | 6l/min  | 200  | 20l/min |
| 040  | 4l/min  | 040  | 4l/min  | 080  | 8l/min  | 250  | 25l/min |
| 050  | 5l/min  | 050  | 5l/min  | 100  | 10l/min | 300  | 30l/min |
| 060  | 6l/min  | 060  | 6l/min  | 120  | 12l/min | 350  | 35l/min |
| 070  | 7l/min  | 070  | 7l/min  | 140  | 14l/min | 400  | 40l/min |
| 080  | 8l/min  | 080  | 8l/min  | 160  | 16l/min | 450  | 45l/min |
| 090  | 9l/min  | 090  | 9l/min  | 180  | 18l/min |      |         |
| 100  | 10l/min | 100  | 10l/min | 200  | 20l/min |      |         |
|      |         | 120  | 12l/min |      |         |      |         |

|                                         |                                                                                                                                                                                                                                                                                                                          |                                              |         |                                         |          |                         |         |                       |          |  |  |  |
|-----------------------------------------|--------------------------------------------------------------------------------------------------------------------------------------------------------------------------------------------------------------------------------------------------------------------------------------------------------------------------|----------------------------------------------|---------|-----------------------------------------|----------|-------------------------|---------|-----------------------|----------|--|--|--|
| <h2>S08</h2>                            | <table border="1"> <tr> <td><b>Pressione massima</b><br/>Maximum pressure</td> <td>210 bar</td> </tr> <tr> <td><b>Portata nominale</b><br/>Nominal Flow</td> <td>12 L/min</td> </tr> <tr> <td><b>Coppia</b><br/>Torque</td> <td>5-8 Nm</td> </tr> <tr> <td><b>Peso</b><br/>Weight</td> <td>0,027 Kg</td> </tr> </table>  | <b>Pressione massima</b><br>Maximum pressure | 210 bar | <b>Portata nominale</b><br>Nominal Flow | 12 L/min | <b>Coppia</b><br>Torque | 5-8 Nm  | <b>Peso</b><br>Weight | 0,027 Kg |  |  |  |
|                                         | <b>Pressione massima</b><br>Maximum pressure                                                                                                                                                                                                                                                                             | 210 bar                                      |         |                                         |          |                         |         |                       |          |  |  |  |
| <b>Portata nominale</b><br>Nominal Flow | 12 L/min                                                                                                                                                                                                                                                                                                                 |                                              |         |                                         |          |                         |         |                       |          |  |  |  |
| <b>Coppia</b><br>Torque                 | 5-8 Nm                                                                                                                                                                                                                                                                                                                   |                                              |         |                                         |          |                         |         |                       |          |  |  |  |
| <b>Peso</b><br>Weight                   | 0,027 Kg                                                                                                                                                                                                                                                                                                                 |                                              |         |                                         |          |                         |         |                       |          |  |  |  |
| <h2>B14</h2>                            | <table border="1"> <tr> <td><b>Pressione massima</b><br/>Maximum pressure</td> <td>210 bar</td> </tr> <tr> <td><b>Portata massima</b><br/>Max flow</td> <td>12 L/min</td> </tr> <tr> <td><b>Coppia</b><br/>Torque</td> <td>3-5 Nm</td> </tr> <tr> <td><b>Peso</b><br/>Weight</td> <td>0,013 Kg</td> </tr> </table>       | <b>Pressione massima</b><br>Maximum pressure | 210 bar | <b>Portata massima</b><br>Max flow      | 12 L/min | <b>Coppia</b><br>Torque | 3-5 Nm  | <b>Peso</b><br>Weight | 0,013 Kg |  |  |  |
|                                         | <b>Pressione massima</b><br>Maximum pressure                                                                                                                                                                                                                                                                             | 210 bar                                      |         |                                         |          |                         |         |                       |          |  |  |  |
| <b>Portata massima</b><br>Max flow      | 12 L/min                                                                                                                                                                                                                                                                                                                 |                                              |         |                                         |          |                         |         |                       |          |  |  |  |
| <b>Coppia</b><br>Torque                 | 3-5 Nm                                                                                                                                                                                                                                                                                                                   |                                              |         |                                         |          |                         |         |                       |          |  |  |  |
| <b>Peso</b><br>Weight                   | 0,013 Kg                                                                                                                                                                                                                                                                                                                 |                                              |         |                                         |          |                         |         |                       |          |  |  |  |
| <h2>B38</h2>                            | <table border="1"> <tr> <td><b>Pressione massima</b><br/>Maximum pressure</td> <td>210 bar</td> </tr> <tr> <td><b>Portata nominale</b><br/>Nominal Flow</td> <td>20 L/min</td> </tr> <tr> <td><b>Coppia</b><br/>Torque</td> <td>5-8 Nm</td> </tr> <tr> <td><b>Peso</b><br/>Weight</td> <td>0,027 Kg</td> </tr> </table>  | <b>Pressione massima</b><br>Maximum pressure | 210 bar | <b>Portata nominale</b><br>Nominal Flow | 20 L/min | <b>Coppia</b><br>Torque | 5-8 Nm  | <b>Peso</b><br>Weight | 0,027 Kg |  |  |  |
|                                         | <b>Pressione massima</b><br>Maximum pressure                                                                                                                                                                                                                                                                             | 210 bar                                      |         |                                         |          |                         |         |                       |          |  |  |  |
| <b>Portata nominale</b><br>Nominal Flow | 20 L/min                                                                                                                                                                                                                                                                                                                 |                                              |         |                                         |          |                         |         |                       |          |  |  |  |
| <b>Coppia</b><br>Torque                 | 5-8 Nm                                                                                                                                                                                                                                                                                                                   |                                              |         |                                         |          |                         |         |                       |          |  |  |  |
| <b>Peso</b><br>Weight                   | 0,027 Kg                                                                                                                                                                                                                                                                                                                 |                                              |         |                                         |          |                         |         |                       |          |  |  |  |
| <h2>B12</h2>                            | <table border="1"> <tr> <td><b>Pressione massima</b><br/>Maximum pressure</td> <td>210 bar</td> </tr> <tr> <td><b>Portata nominale</b><br/>Nominal Flow</td> <td>45 L/min</td> </tr> <tr> <td><b>Coppia</b><br/>Torque</td> <td>8-12 Nm</td> </tr> <tr> <td><b>Peso</b><br/>Weight</td> <td>0,054 Kg</td> </tr> </table> | <b>Pressione massima</b><br>Maximum pressure | 210 bar | <b>Portata nominale</b><br>Nominal Flow | 45 L/min | <b>Coppia</b><br>Torque | 8-12 Nm | <b>Peso</b><br>Weight | 0,054 Kg |  |  |  |
|                                         | <b>Pressione massima</b><br>Maximum pressure                                                                                                                                                                                                                                                                             | 210 bar                                      |         |                                         |          |                         |         |                       |          |  |  |  |
| <b>Portata nominale</b><br>Nominal Flow | 45 L/min                                                                                                                                                                                                                                                                                                                 |                                              |         |                                         |          |                         |         |                       |          |  |  |  |
| <b>Coppia</b><br>Torque                 | 8-12 Nm                                                                                                                                                                                                                                                                                                                  |                                              |         |                                         |          |                         |         |                       |          |  |  |  |
| <b>Peso</b><br>Weight                   | 0,054 Kg                                                                                                                                                                                                                                                                                                                 |                                              |         |                                         |          |                         |         |                       |          |  |  |  |