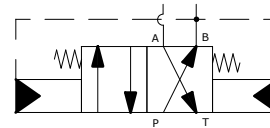
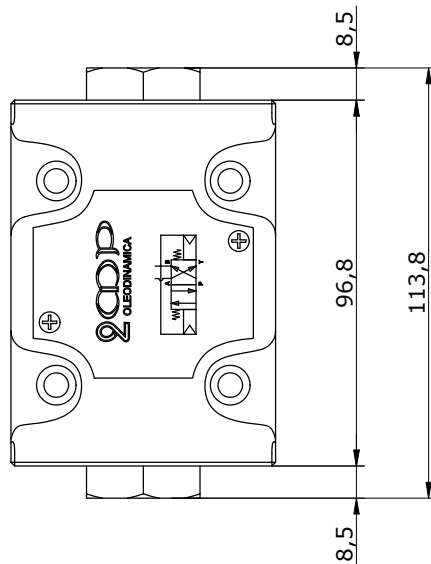
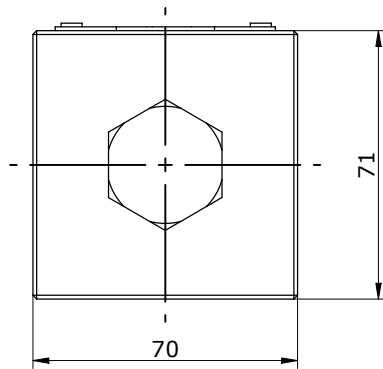


Schema idraulico  
 Hydraulic diagram

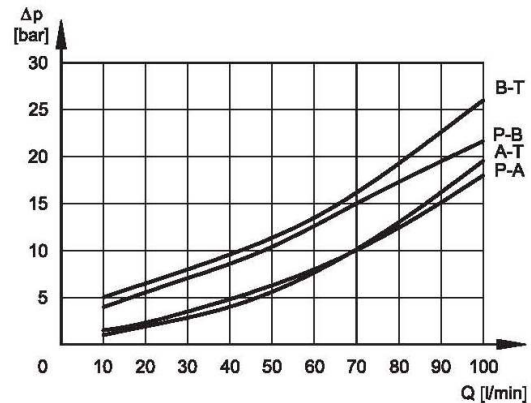


**CARATTERISTICHE TECNICHE**  
**CHARACTERISTICS**

|                                      |  |           |
|--------------------------------------|--|-----------|
| Maximum operating pressure on port P | bar  | 320       |
| Maximum flow rate                    | l/min  | 100       |
| Minimum allowed flow rate            | l/min  | 10        |
| Minimum allowed pressure             | l/min  | 60        |
| Pressure drop $\Delta p$ -Q          | see paragraph                                |           |
| Ambient temperature range            | °C   | -20 / +50 |
| Fluid temperature range              | °C   | -20 / +80 |
| Fluid viscosity range                | cSt  | 10 + 400  |
| Fluid contamination degree           | according to ISO 4406:1999<br>class 20/18/15 |           |
| Recommended viscosity                | cSt  | 25        |
| Mass                                 | kg   | 3         |



**PERDITE DI CARICO**  
**PRESSURE DROPS**



**ES 610 - 42**