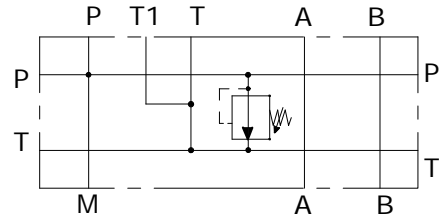
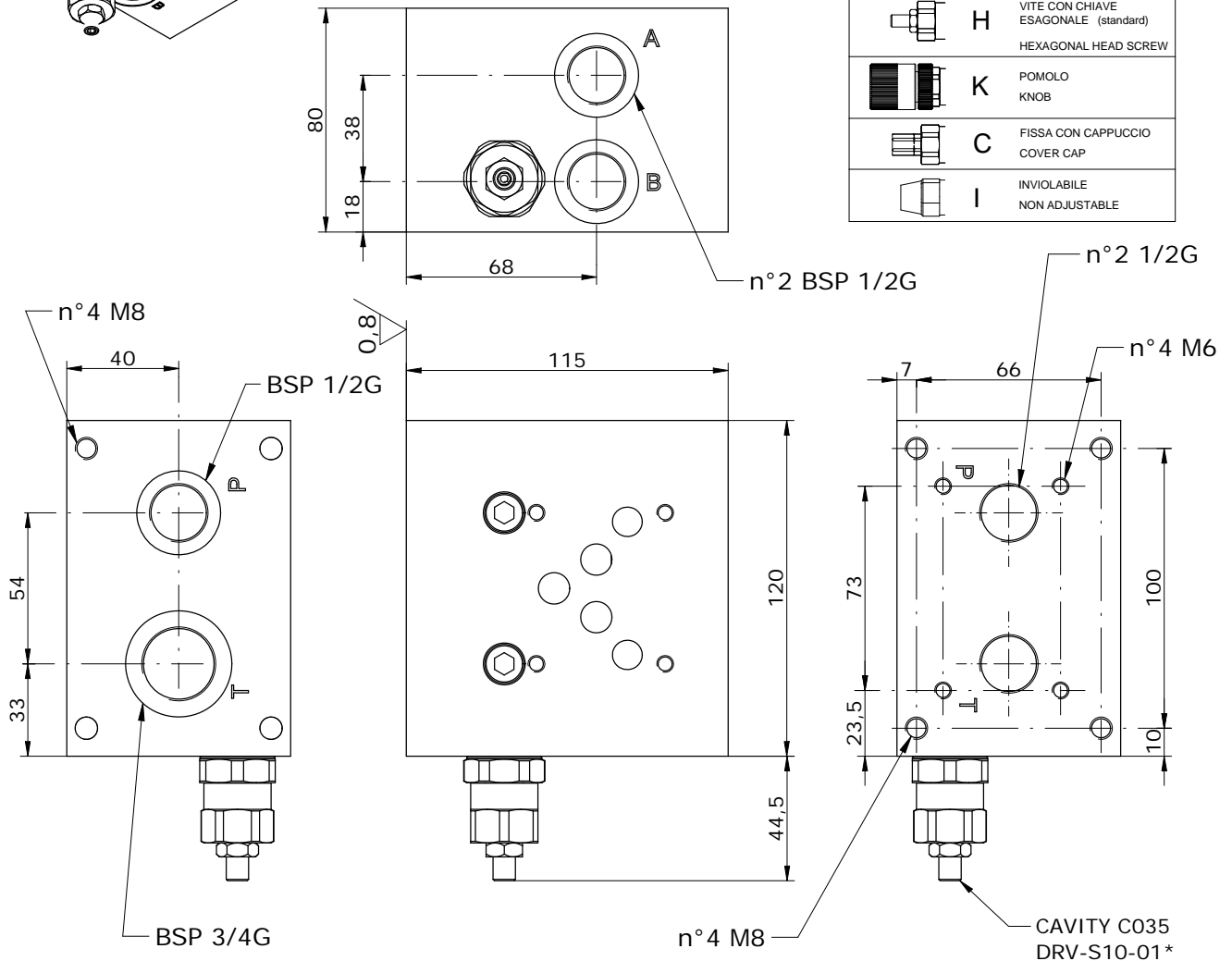


Schema idraulico
 Hydraulic diagram



TIPI DI REGOLAZIONE PER V. MAX
 REGULATION TYPE FOR RELIEF VALVE

| | | |
|--|---|---|
| | H | VITE CON CHIAVE ESAGONALE (standard) HEXAGONAL HEAD SCREW |
| | K | POMOLO KNOB |
| | C | FISSA CON CAPPuccio COVER CAP |
| | I | INVIOLABILE NON ADJUSTABLE |



E_ 610 - 24 - 12 - _ - _

S = STEEL
A = ALUMINUM

0 = WITHOUT RELIEF VALVE
1 = 0-80 bar
2 = 50-190 bar
3 = 100-350 bar

OMETTERE / OMIT
H = HEXAGONAL HEAD SCREW
K = KNOB
C = COVER CAP
I = NOT ADJUSTABLE

*see **CARTDRIGE VALVES** catalog