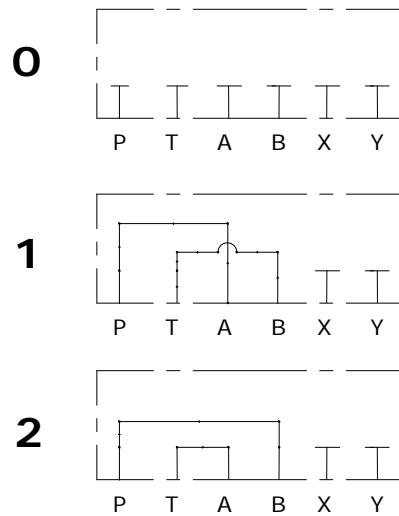
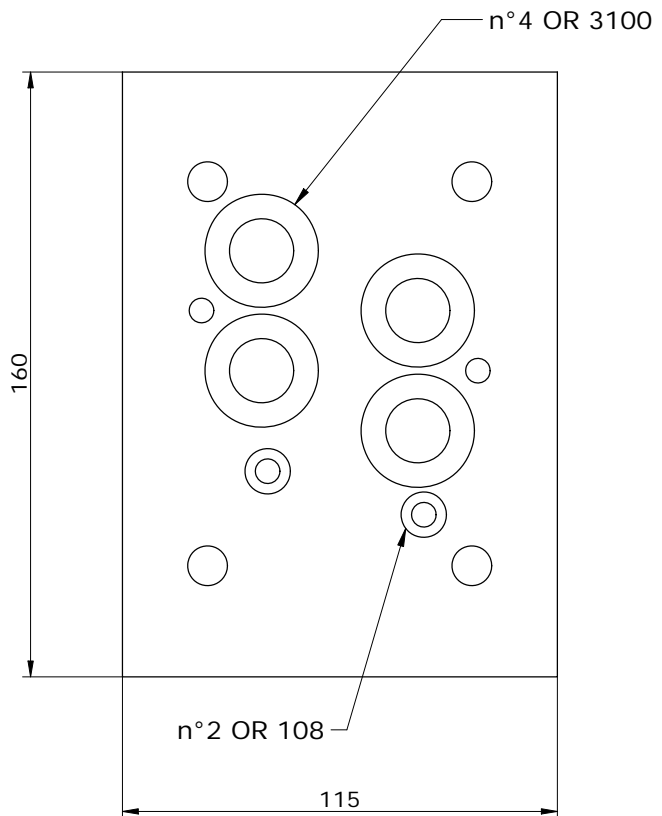
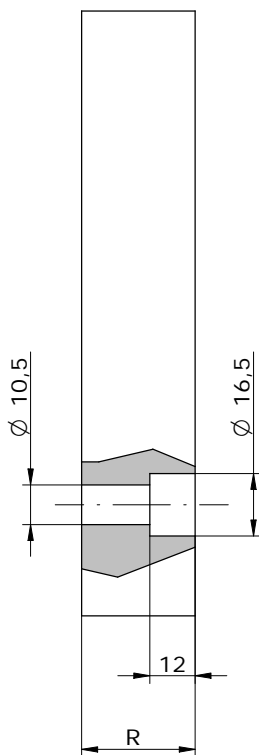


Schema idraulico
 Hydraulic diagram



VERSION	R	
E_16-03-30-0	30	STANDARD
E_16-03-30-1	45	ON REQUEST
E_16-03-30-2	30	ON REQUEST



E_ 16 - 03 - 30 - _

S = STEEL
A = ALUMINUM

SEE DIAGRAMS