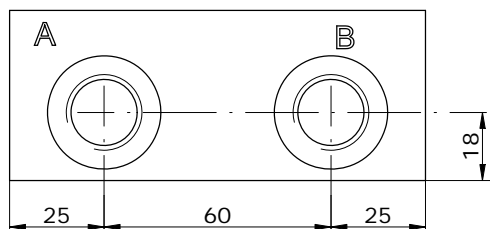
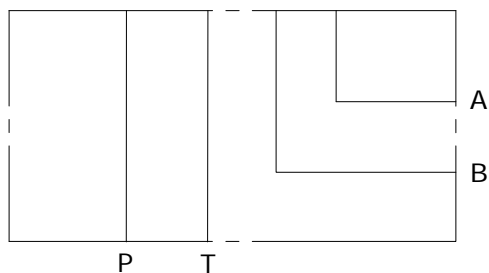
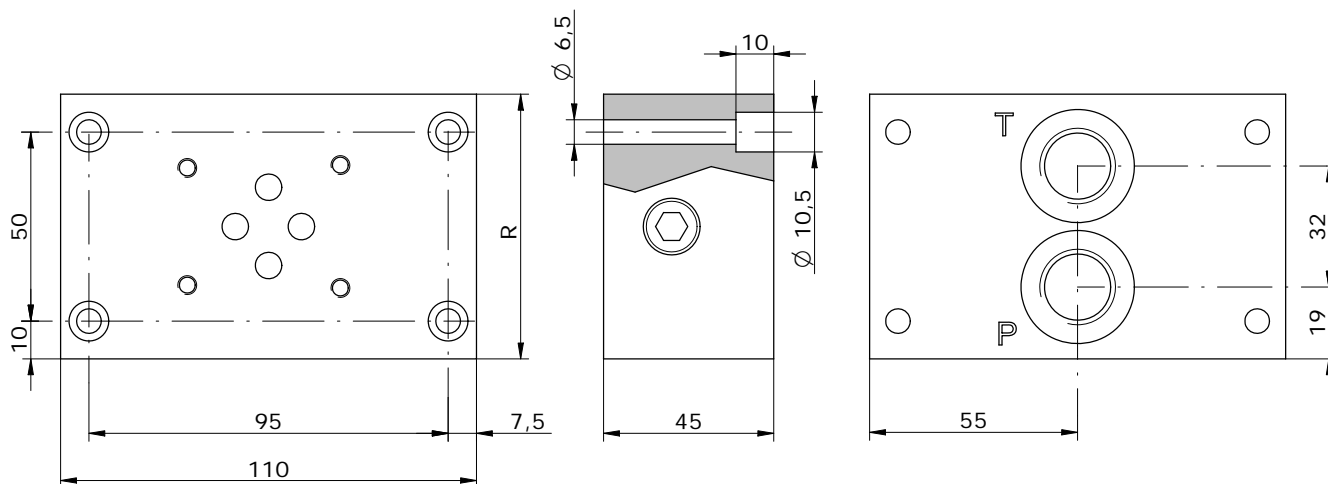


Schema idraulico  
Hydraulic diagram



VERSION	R
E_06-15-14	65
E_06-15-38	65
E_06-15-12	70



**E\_06 - 15 - \_\_\_\_\_**

**S** = STEEL  
**A** = ALUMINUM

**14** = BSP 1/4G  
**38** = BSP 3/8G  
**12** = BSP 1/2G