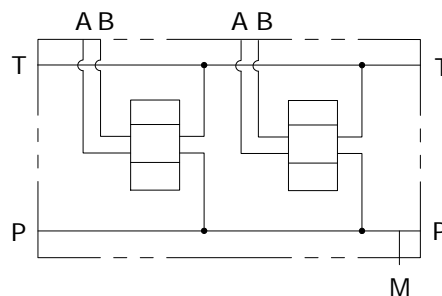
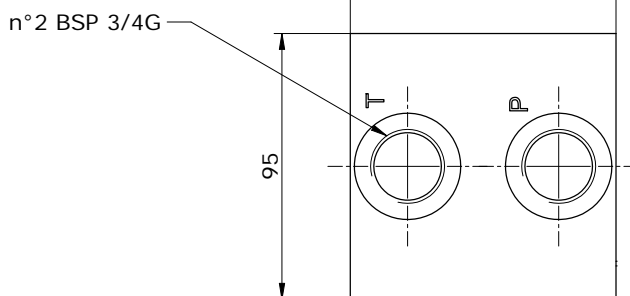
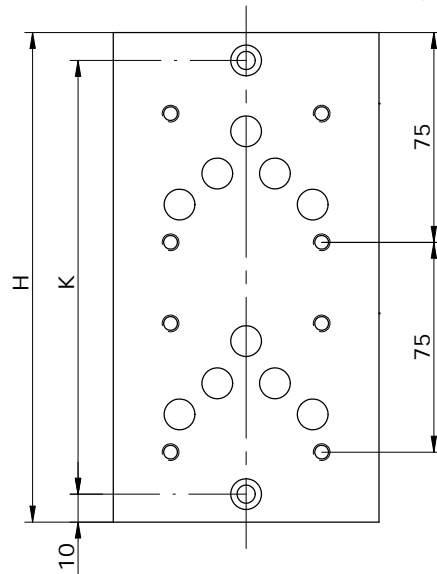
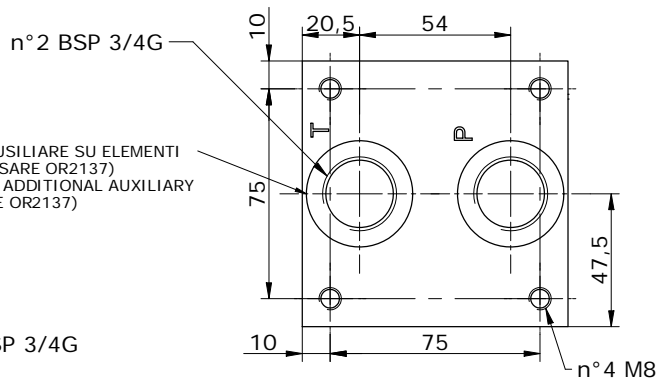
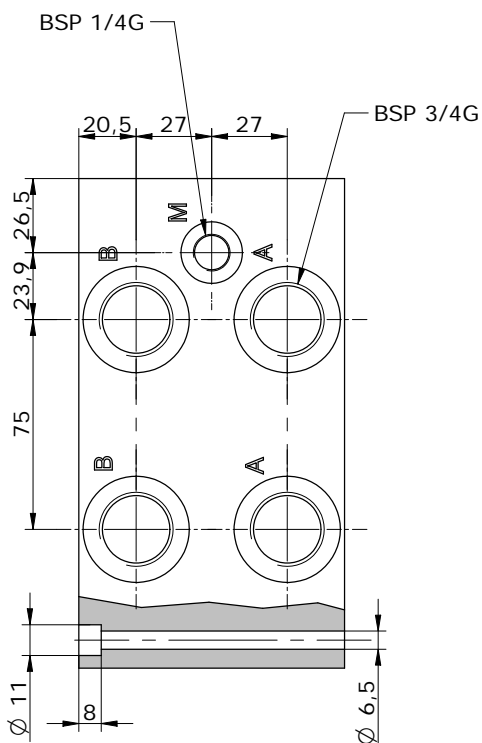


Schema idraulico
 Hydraulic diagram



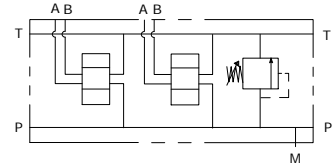
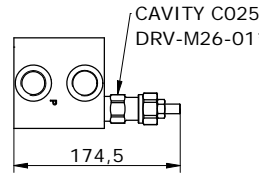
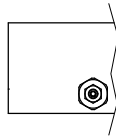
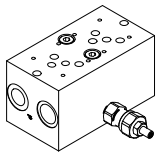
INTERFACCIA AUSILIARE SU ELEMENTI
 AGGIUNTIVI (USARE OR2137)
 INTERFACE FOR ADDITIONAL AUXILIARY
 ELEMENTS (USE OR2137)



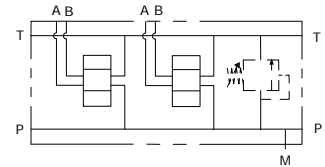
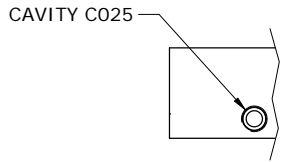
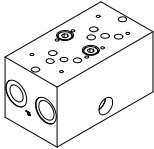
E_ 10 - 06 - 34 - ___ - 0

| POS. | 01 | 02 | 03 | 04 | 05 | 06 | 07 | 08 | 09 | 10 |
|------|-----|-----|-----|-----|-----|-----|-----|-----|-----|-----|
| H | 100 | 175 | 250 | 325 | 400 | 475 | 550 | 625 | 700 | 775 |
| K | 84 | 159 | 234 | 309 | 384 | 459 | 534 | 609 | 684 | 759 |

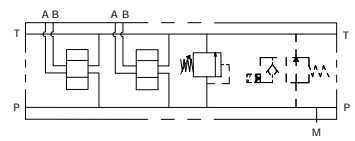
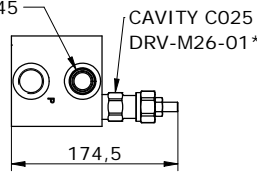
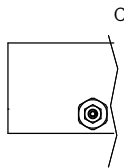
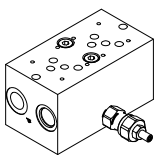
E_ 10 - 06 - 34 - ___ - 1



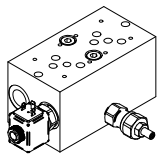
E_ 10 - 06 - 34 - ___ - 2



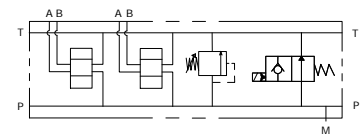
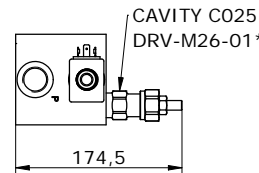
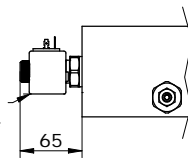
E_ 10 - 06 - 34 - ___ - 4



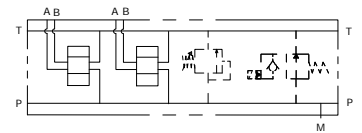
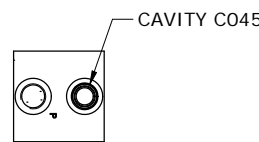
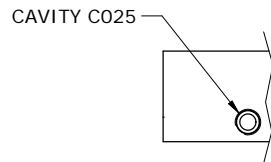
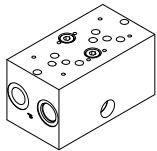
E_ 10 - 06 - 34 - ___ - 5



CAVITY C045
SVCP-S12-TS2*



E_ 10 - 06 - 34 - ___ - 6



E_ 10 - 06 - 34 - _____

MOUNTING POSITIONS: 01 ÷ 10

S = STEEL
A = ALUMINIUM

0 = WITHOUT RELIEF VALVE
1 = WITH RELIEF VALVE
2 = RELIEF VALVE READY
4 = WITH R.V. AND V.V. READY
5 = WITH R.V. AND V.V.
6 = V.V. READY AND R.V. READY

0 = WITHOUT RELIEF VALVE
1 = 5-55 bar
2 = 25-110 bar
3 = 75-250 bar

0 = WITHOUT RELIEF VALVE
H = HEX. HEAD SCREW K = KNOB C = COVER CAP I = NOT ADJUSTABLE

SEALS
N = BUNA
V = VITON

VENTING VALVE
000 = WITHOUT V.V.
TS2 = NORMALLY OPEN

VENTING VALVE
0 = NO MANUAL OVERRIDE
2 = PUSH AND TWIST
4 = PUSH BOTTON

CONNECTOR TYPE
0 = WITHOUT COIL
C = CAVI / LEADS
D = DIN 43650
G = DEUTSCH DT04-2P
A = AMP JUNIOR

TENSIONE / VOLTAGE
000 = WITHOUT COIL
D12 = 12 VDC
D24 = 24 VDC
D26 = 26 VDC

* see **CARTRIDGE VALVES** datasheets