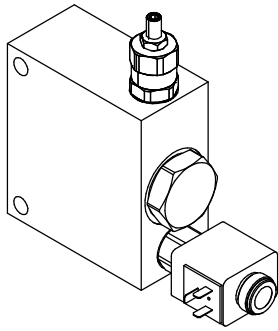


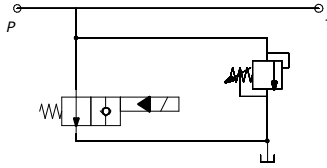
**VALVOLA REGOLATRICE DI MASSIMA PRESSIONE CON ELETTROVALVOLA
DI MESSA A SCARICO
SOLENOID OPERATED PRESSURE RELIEF VALVE WITH VENTING**

**OLEODINAMICA
2mp**

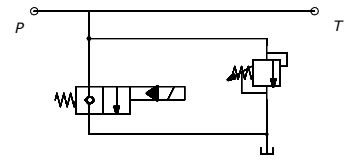


La valvola R V V è inserita nelle linee di pressione fornire la funzione di messa a scarico e la protezione con valvola di massima. E' disponibile nelle misure da 1/4" BSP a 1.1/2" BSP per portate sino a 380 l/min con perdite di carico contenute. L'impiego di un elemento logico pilotato garantisce perdite di carico contenute. R V V valve is teed into pressure lines to provide a venting function and relief valve protection. The valve is available from 1/4" BSP to 1.1/2" BSP for flows up to 380 l/min. A vented type logic element is used to provide low pressure drop.

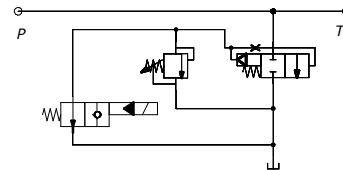
**DIRETTO CON VALVOLA ELETTRICA
NORMALMENTE APERTA.**
DIRECTED WITH VENTING VALVE
NORMALLY OPEN



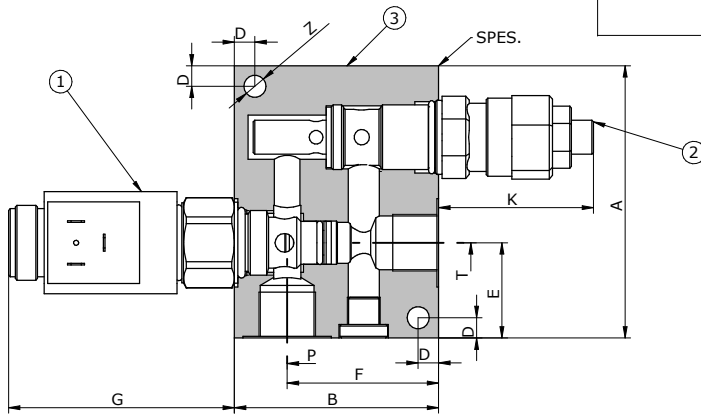
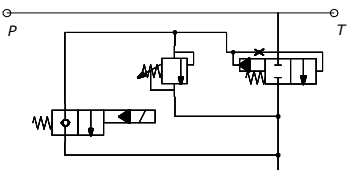
**DIRETTO CON VALVOLA ELETTRICA
NORMALMENTE CHIUSA.**
DIRECTED WITH VENTING VALVE
NORMALLY CLOSED



**PILOTATA CON VALVOLA ELETTRICA
NORMALMENTE APERTA**
PILOT TYPE WITH VENTING VALVE
NORMALLY OPEN



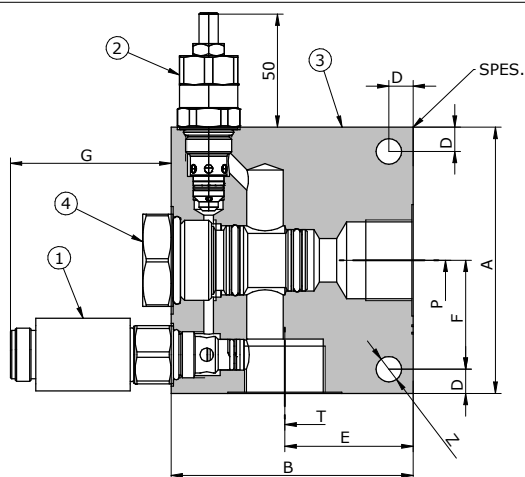
**PILOTATA CON VALVOLA ELETTRICA
NORMALMENTE CHIUSA**
PILOT TYPE WITH VENTING VALVE
NORMALLY CLOSED



R V V _

- 01- VALVOLA ELETTRICA PER LA MESSA A SCARICO**
ELECTRICAL VENTING VALVE
- 02- VALVOLA DI MASSIMA PRESSIONE**
RELIEF VALVE
- 03- CORPO VALVOLA**
VALVE BODY

	P-T	A	B	SPES.	K	D	E	F	G	Z
RVV_10	G1/4	80	55	40	36	6	28	39,5	61,7	6,5
RVV_20	G3/8	80	60	40	52	6	28	44,5	61,7	6,5



R V V _

- 01- VALVOLA ELETTRICA PER LA MESSA A SCARICO**
ELECTRICAL VENTING VALVE
- 02- VALVOLA DI MASSIMA PRESSIONE**
RELIEF VALVE
- 03- CORPO VALVOLA**
VALVE BODY
- 04- ELEMENTO LOGICO**
VENTED SPOOL-TYPE LOGIC ELEMENT

	P-T	A	B	SPES.	C	D	E	F	G	Z
RVV_30	G1/2	100	85	40	37,5	8	44	42	61,7	8,5
RVV_40	G3/4	100	85	40	37,5	8	40,2	42	61,7	8,5
RVV_50	G1"	110	100	50	37,5	10	53	45	61,7	10,5
RVV_60	G1.1/4"	130	130	70	37,5	12	78	63	61,7	12,5
RVV_70	G1.1/2"	130	130	80	37,5	12	70	63	61,7	12,5

Via Nicolò Copernico 12/c-d
29027 Casoli Di Gariga - Podenzano (PC) Italy

www.oleodinamica2mp.it
Tel +39 0523 523231
Fax +39 0523 524509

PER ORDINARE / TO ORDER

R V V - - - - - 10

**VALVOLA REGOLATRICE DI MASSIMA
PRESSIONE CON ELETTROVALVOLA DI MESSA
A SCARICO
SOLENOID OPERATED PRESSURE RELIEF VALVE
WITH VENTING**

MATERIALE / MATERIAL

**A = ALLUMINIO / ALLUMINUM
S = AVP / STEEL**

ATTACCHI / PORTING

**10 = 1/4"
20 = 3/8"
30 = 1/2"
40 = 3/4"
50 = 1"
60 = 1.1/4"
70 = 1.1/2"**

VALVOLA ELETTRICA / ELECTRIC VALVE

**NA = NORMALMENTE APERTA / NORMALLY OPEN (SVCP- S08- TS2)
NC = NORMALMENTE CHIUSA / NORMALLY CLOSED (SVCP- S08 -TS1)**

TARATURA MOLLA / SPRING RANGE

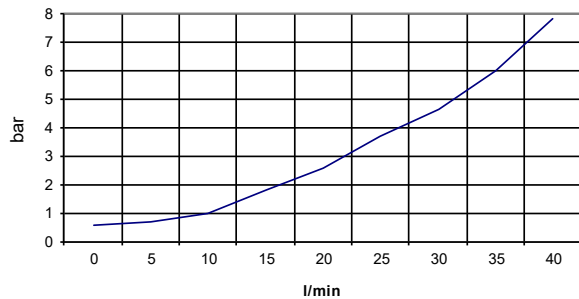
**1 = 5-50 bar
2 = 30-100 bar
3 = 50-250 bar
4 = 100-350 bar**

TENSIONE STANDARD BOBINA / VOLTAGE STANDARD COIL

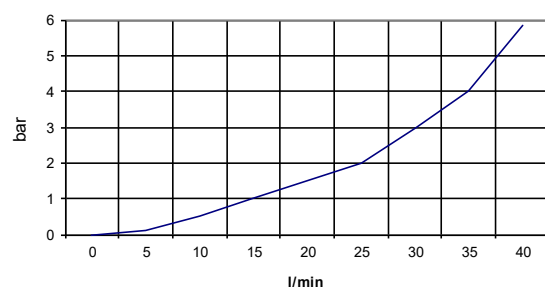
**1 = 12 V dc DIN 43650
2 = 24 V dc DIN 43650**

PERDITE DI CARICO / PRESSURE PERFORMANCE

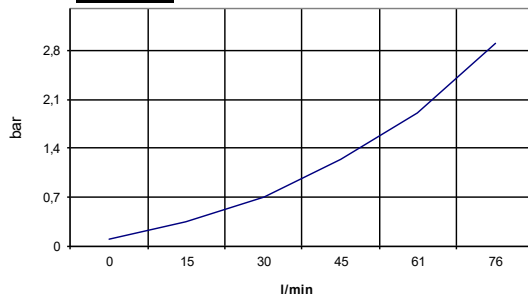
RVV10 RVV20 NORMALLY CLOSED



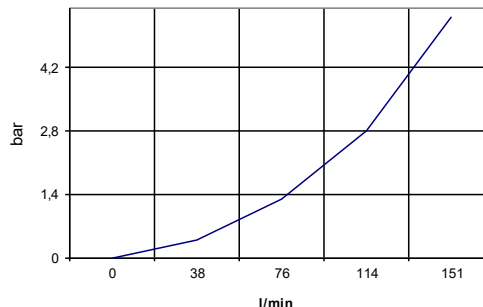
RVV10 RVV20 NORMALLY OPEN



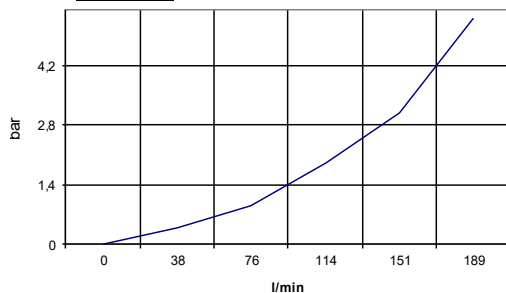
RVV30



RVV40



RVV50



RVV60 RVV70

