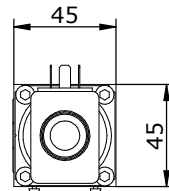
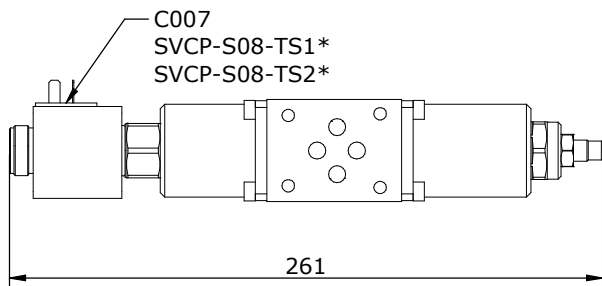
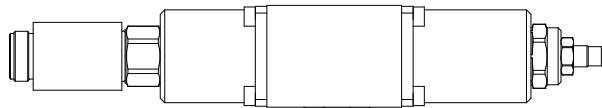
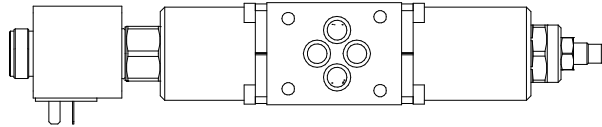
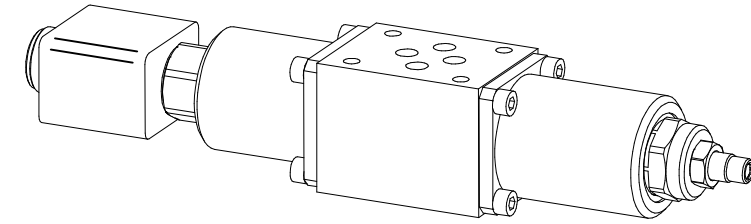


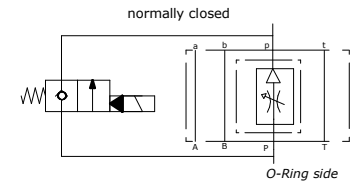
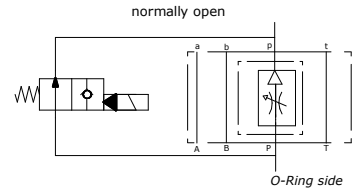
**VALVOLA DI REGOLAZIONE PORTATA RAPIDO-LENTO COMPENSATA
A COMANDO ELETTRICO
PRESSURE COMPENSATED ELECTRICAL HI-LOW FLOW
REGULATION VALVE**

**OLEODINAMICA
2mp**

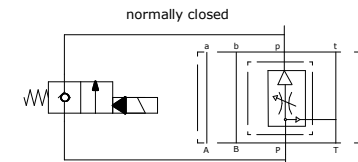
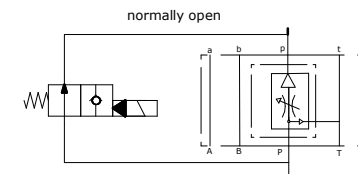


Schema idraulico
Hydraulic diagram

MVS 06-FRRP-2

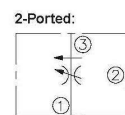
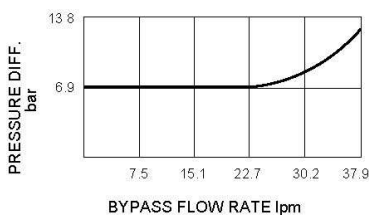
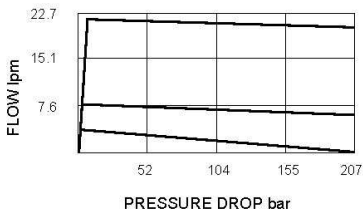


MVS 06-FRRP-3

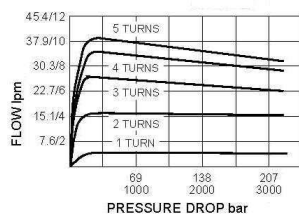


**CARATTERISTICHE REGOLATORE DI FLUSSO
FLOW REGULATION VALVE PERFORMANCE**

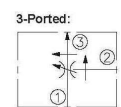
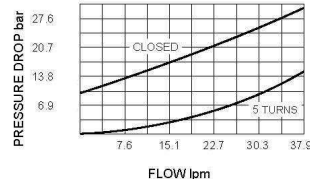
**SERIE : 024 TO 289
RANGE: 024 TO 289**



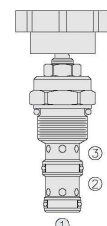
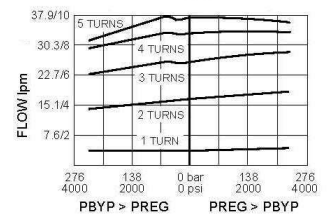
2-Ported
Regulated Flow vs. Pressure Drop
at 240 bar oil at 40°C



Pressure Drop vs. Reverse Flow
from ③ to ①
34.5 bar Inlet Pressure
32 cST/150 ssu oil at 40°C



3-Ported
Regulated Flow vs. Load
at 38 lpm oil at 40°C



Via Nicolò Copernico 12/c-d
29027 Casoli Di Gariga - Podenzano (PC) Italy

www.oleodinamica2mp.it
Tel +39 0523 523231
Fax +39 0523 524509

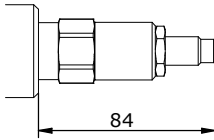
**VALVOLA DI REGOLAZIONE PORTATA RAPIDO-LENTO COMPENSATA
A COMANDO ELETTRICO
PRESSURE COMPENSATED ELECTRICAL HI-LOW FLOW
REGULATION VALVE**

**OLEODINAMICA
2mp**

**OPZIONI DI REGOLAZIONE
ADJUSTMENT OPTIONS**

**SERIE : 024 TO 289
RANGE: 024 TO 289**

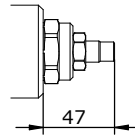
WITH HEX ALLEN HEAD



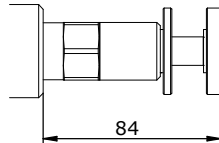
H

**SERIE : 390
RANGE : 390**

WITH HEX ALLEN HEAD

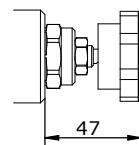


WITH ALUMINUM KNOB



K

WITH PLASTIC KNOB



MV_06 - FRR - - - - - 10

**S = STEEL
A = ALUMINIUM**

P = REGULATION ON P

**2 = 2 PORTS
3 = 3 PORTS**

FLOW REGULATION

**024 = 1,42 TO 2,37 l/min
047 = 2,84 TO 4,73 l/min
096 = 5,68 TO 9,46 l/min
118 = 7,08 TO 11,81 l/min
141 = 8,52 TO 14,19 l/min
189 = 11,35 TO 18,93 l/min
236 = 14,19 TO 23,66 l/min
289 = 17,03 TO 28,93 l/min**

**H = HEXAGONAL HEAD SCREW
K = KNOB**

**N = BUNA (standard)
V = VITON**

VENTING VALVE

**TS1 : NORMALLY CLOSED
TS2 : NORMALLY OPEN**

REGOLAZIONE / REGULATION

| SVCP-S08-TS1 | SVCP-08-TS2 |
|---|--|
| 0 = SENZA COMANDO MANUALE / WITHOUT MANUAL OVERRIDE | |
| 1 = VITE / SCREW | 3 = PRESSIONE SU SPINA / PUSH PIN |
| 2 = SPINGA E GIRA / PUSH AND TWIST | 4 = PRESSIONE SU BOTTONE / PUSH BOTTON |
| 6 = TAPPO PREMUTO / PULL AND HOLD | 5 = BRUGOLA / ALLEN |

TENSIONE / TENSION

| SVCP-S08-TS1 | SVCP-08-TS2 |
|-----------------------------------|---------------|
| 000 = SENZA BOBINA / WITHOUT COIL | |
| D12 = 12 VDC | D12 = 12 VDC |
| D24 = 24 VDC | D24 = 24 VDC |
| 220 = 220 RAC | 220 = 220 RAC |

SERIES

**TIPO CONNETTORE /
CONNECTOR TYPE**
0 = SENZA BOBINE /
WITHOUT COIL
C = CAVI / LEADS
D = DIN 43650
G = DEUTSCH DT04-2P
A = AMP JUNIOR

***see CARTDRIGE VALVES datasheets**

Via Nicolò Copernico 12/c-d
29027 Casoli Di Gariga - Podenzano (PC) Italy

www.oleodinamica2mp.it
Tel +39 0523 523231
Fax +39 0523 524509