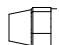
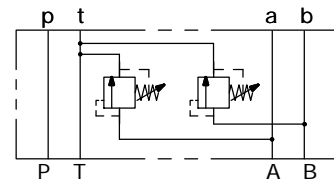
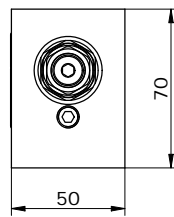
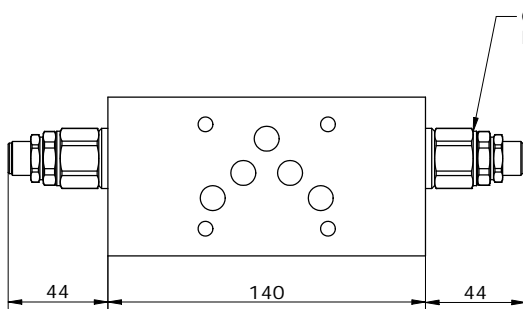
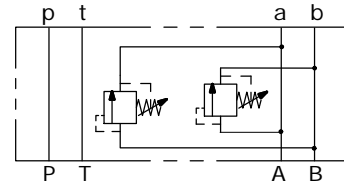
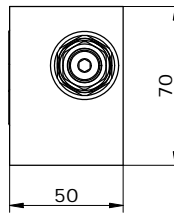
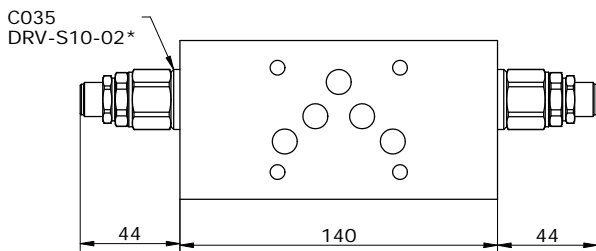
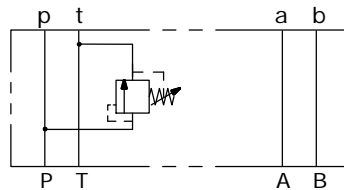
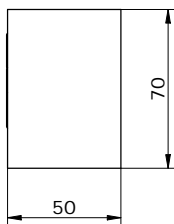
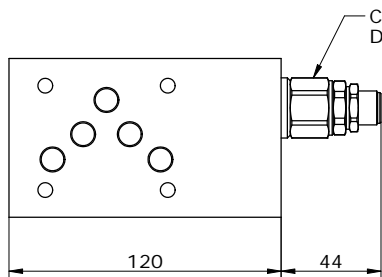
	<b>H</b>	VITE CON CHIAVE ESAGONALE (standard) HEXAGONAL HEAD SCREW
	<b>I</b>	INVIOLABILE NON ADJUSTABLE



**DT**  
 O-Ring side



**D**  
 O-Ring side



**P**  
 O-Ring side

**MV\_ 10 - RV - - - - - 10**

**S** = STEEL  
**A** = ALUMINIUM

**D** = A vs. B ; B vs. A  
**DT** = A vs. T ; B vs. T  
**P** = P vs. T

**1** = 5-75 bar  
**2** = 75-125 bar  
**3** = 220-350 bar  
**4** = 220-350 bar

SERIES

**H** = HEXAGONAL HEAD  
 SCREW  
**I** = NOT ADJUSTABLE

**N** = NBR (standard)  
**V** = VITON

\*see **CARTRIDGE VALVES** datasheets

Via Nicolò Copernico 12/c-d  
 29027 Casoli Di Gariga - Podenzano (PC) Italy

www.oleodinamica2mp.it  
 Tel +39 0523 523231  
 Fax +39 0523 524509